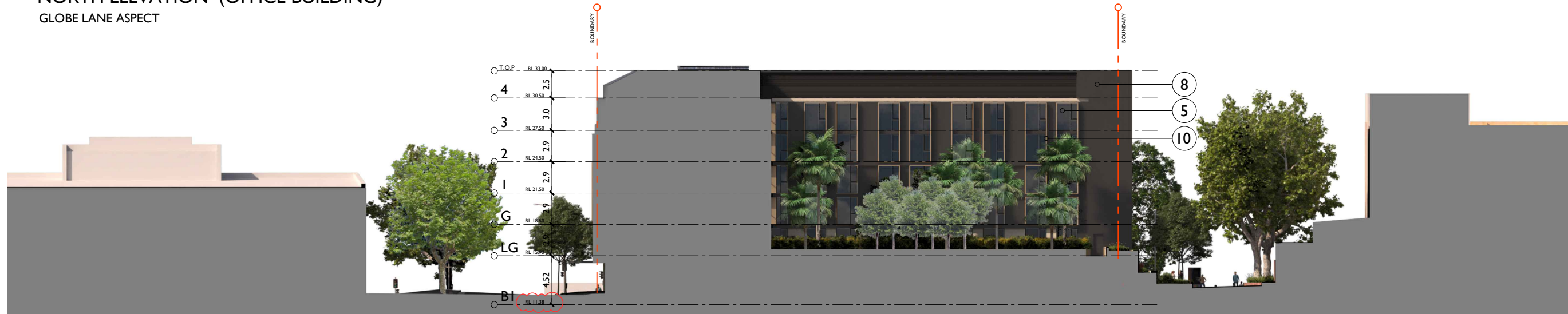




NORTH ELEVATION (OFFICE BUILDING)
GLOBE LANE ASPECT



NORTH ELEVATION (MOTEL)

COLOUR AND MATERIALS SCHEDULE

1 ALUMINIUM CLADDING VITRADUAL (NON COMBUSTIBLE) MONUMENT WALLING	2 OFF FORM CONCRETE FINISH CONCRETE EDGES, & WALLING	3 TIMBER LOOK ALUMINIUM SCREENING GOLDEN OAK SCREENING, LOUVRES	4 SHOP FRONT GLAZING CLEAR GLAZING ELEMENTS AND BALUSTRADES	5 GLAZING TINTED THERMALLY VENTED DOUBLE GLAZING PANELS (INTERNAL TIMBER BLINDS)	6 ALUMINUM DURETEC POWDERCOAT MONUMENT DOOR AND WINDOW FRAMES, HANDRAILS, LOUVRES, SECURITY SHUTTERS, SLAB EDGES & SCREENING	7 SANDSTONE CLADDING CLADDING WITH JOINTS	8 STANDING SEAM COLORBOND CLADDING CLADDING WITH JOINTS (NON COMBUSTIBLE) MONUMENT	9 ALUMINIUM PERFORATED SCREEN DURATEC FINE GOLD PEARL KINETIC
10 METALLIC CLADDING ELECTRO NEW COPPER KINETIC STEEL FRAME, BEAM, SLAB EDGES, LOUVRES, ROOF, AWNING & SUNSHADES	11 TIMBER WALL CLADDING GOLDEN OAK WALLING & AWNING	12 WALL CLADDING BLUE STONE GRANITE WALLING	13 OFF FORM CONCRETE FINISH CONCRETE EDGES, & WALLING					

ISSUE	DATE	DESCRIPTION	initials	chkd
E	03-12-24	REISSUED FOR DA		
D	21-10-24	REISSUED FOR DA		
C	06-08-24	REISSUED FOR DA		
B	01-09-23	ISSUED FOR DA		
A	25-11-22	ISSUED FOR DRP		

sign _____ date _____
These drawings are not to be scaled. Figured dimensions shall be used in all cases.

COPYRIGHT - These drawings remain the exclusive copyright of ADM Architects. Reproductions in any form whether electronic, digital or otherwise shall not be allowed except by express permission granted in writing by ADM Architects.
FIGURED DIMENSIONS - These drawings are not to be scaled. Figured dimensions shall be used in all cases.
DISCREPANCIES IN DIMENSIONS/POSITIONS/LOCATIONS/FINISHES The Contractor is to verify any dimensional, location or finish discrepancy with ADM Architects prior to any physical construction or setting out so that ADM Architects is given the opportunity to resolve potential discrepancies or conflicts in sufficient time without causing abortive work. The Contractor shall be responsible for notifying ADM Architects of any such discrepancy or conflict that may arise on site.
COORDINATION OF WORKS - These drawings are to be read in conjunction with the full set of consultant's drawings, specifications, reports and DA conditions.
NOMINATED ARCHITECT - The nominated Architect for ADM Projects (Australia) Pty Ltd T/A ADM Architects is Angelo Di Martino ARB No.7608



JACKSON TEECE

Sydney: Level 1, Pier 6, 23 Hickson Road Sydney, NSW 2000 Australia T +61 2 9260 1772 F +61 2 9260 1780 jteece@jacksonteece.com
Brisbane: Level 20, 244 Queen Street Brisbane, QLD 4000 Australia T +61 7 3226 2771 F +61 7 3226 2386 brisbane@jacksonteece.com
National Architects: Damien Barker (B192), John Goss (B179), Daniel Hutton (B110)
Concepts and information contained in this drawing are copyright and may not be reproduced in whole or part or by any medium, without the written permission of Jackson Teece. Do not scale this drawing, use figured dimensions only. Verify all project dimensions before commencing on-site work or off-site fabrication. Notify Jackson Teece of any discrepancies and seek instructions.

Project PROPOSED 3-STAGE MIXED USE DEVELOPMENT COMPRISING OF HOTEL, OFFICE, MOTEL AND CLUB OVER BASEMENT PARKING
for 171 CROWN PTY LTD
at 80-82 CHURCH & 163-171 CROWN ST WOLLONGONG

scale 1:200 @ A1 1:400 @ A3
date DECEMBER 2024
drawn LGD SJ HR chkd ADM
drawing DEVELOPMENT APPLICATION
NORTH ELEVATION 02
Project No. 2021-15
Drawing No. A-202
issue E

NOT FOR CONSTRUCTION



EAST ELEVATION
CHURCH STREET ASPECT

COLOUR AND MATERIALS SCHEDULE

1

ALUMINIUM CLADDING
VITRADUAL
(NON COMBUSTIBLE)

MONUMENT

WALLING

2

OFF FORM CONCRETE
FINISH

CONCRETE EDGES,
& WALLING

3

TIMBER LOOK
ALUMINIUM SCREENING

GOLDEN OAK

SCREENING, LOUVRES

4

SHOP FRONT GLAZING

CLEAR

GLAZING ELEMENTS AND
BALUSTRADES

5

GLAZING

TINTED

THERMALLY VENTED DOUBLE
GLAZING PANELS
(INTERNAL TIMBER BLINDS)

6

ALUMINUM DURETEC
POWDERCOAT
MONUMENT

DOOR AND WINDOW FRAMES,
HANDRAILS, LOUVRES, SECURITY
SHUTTERS, SLAB EDGES &
SCREENING

7

SANDSTONE CLADDING

CLADDING WITH JOINTS

8

STANDING SEAM
COLORBOND
CLADDING
CLADDING WITH JOINTS
(NON COMBUSTIBLE)
MONUMENT

9

ALUMINIUM
PERFORATED SCREEN

DURATEC
FINE GOLD PEARL KINETIC

10

METALLIC CLADDING

ELECTRO
NEW COPPER KINETIC

STEEL FRAME, BEAM, SLAB EDGES, LOUVRES,
ROOF, AWNING & SUNSHADES

11

TIMBER WALL
CLADDING

GOLDEN OAK

WALLING & AWNING

12

WALL CLADDING

BLUE STONE GRANITE

WALLING

13

OFF FORM CONCRETE
FINISH

CONCRETE EDGES,
& WALLING

E	03-12-24	REISSUED FOR DA		
D	21-10-24	REISSUED FOR DA		
C	06-08-24	REISSUED FOR DA		
B	01-09-23	ISSUED FOR DA		
A	25-11-22	ISSUED FOR DRP		
ISSUE	DATE	DESCRIPTION	Initials	chkd
sign _____ date _____				
These drawings are not to be scaled. Figured dimensions shall be used in all cases.				

COPYRIGHT - These drawings remain the exclusive copyright of ADM Architects. Reproductions in any form whether electronic, digital or otherwise shall not be allowed except by express permission granted in writing by ADM Architects.

FIGURED DIMENSIONS - These drawings are not to be scaled. Figured dimensions shall be used in all cases.

DISCREPANCIES IN DIMENSIONS/POSITIONS/LOCATIONS/FINISHES - The Contractor is to verify any dimensional, location or finish discrepancy with ADM Architects prior to any physical construction or setting out so that ADM Architects is given the opportunity to resolve potential discrepancies or conflicts in sufficient time without causing abortive work. The Contractor shall be responsible for notifying ADM Architects of any such discrepancy or conflict that may arise on site.

CO-ORDINATION OF WORKS - These drawings are to be read in conjunction with the full set of consultant's drawings, specifications, reports and DA conditions.

NOMINATED ARCHITECT - The nominated Architect for ADM Projects (Australia) Pty Ltd T/A ADM Architects is Angelo Di Martino ARB No.7608



94 Kembla St, Wollongong NSW 2500 PO Box 3561 Wollongong
ph: 02 4228 8406 fax: 02 4228 8455 www.admarchitects.com.au

JACKSON TEECE

Sydney
Level 1, 101, 102, 103, 104, 105, 106, 107, 108, 109, 110, 111, 112, 113, 114, 115, 116, 117, 118, 119, 120, 121, 122, 123, 124, 125, 126, 127, 128, 129, 130, 131, 132, 133, 134, 135, 136, 137, 138, 139, 140, 141, 142, 143, 144, 145, 146, 147, 148, 149, 150, 151, 152, 153, 154, 155, 156, 157, 158, 159, 160, 161, 162, 163, 164, 165, 166, 167, 168, 169, 170, 171, 172, 173, 174, 175, 176, 177, 178, 179, 180, 181, 182, 183, 184, 185, 186, 187, 188, 189, 190, 191, 192, 193, 194, 195, 196, 197, 198, 199, 200, 201, 202, 203, 204, 205, 206, 207, 208, 209, 210, 211, 212, 213, 214, 215, 216, 217, 218, 219, 220, 221, 222, 223, 224, 225, 226, 227, 228, 229, 230, 231, 232, 233, 234, 235, 236, 237, 238, 239, 240, 241, 242, 243, 244, 245, 246, 247, 248, 249, 250, 251, 252, 253, 254, 255, 256, 257, 258, 259, 260, 261, 262, 263, 264, 265, 266, 267, 268, 269, 270, 271, 272, 273, 274, 275, 276, 277, 278, 279, 280, 281, 282, 283, 284, 285, 286, 287, 288, 289, 290, 291, 292, 293, 294, 295, 296, 297, 298, 299, 300, 301, 302, 303, 304, 305, 306, 307, 308, 309, 310, 311, 312, 313, 314, 315, 316, 317, 318, 319, 320, 321, 322, 323, 324, 325, 326, 327, 328, 329, 330, 331, 332, 333, 334, 335, 336, 337, 338, 339, 340, 341, 342, 343, 344, 345, 346, 347, 348, 349, 350, 351, 352, 353, 354, 355, 356, 357, 358, 359, 360, 361, 362, 363, 364, 365, 366, 367, 368, 369, 370, 371, 372, 373, 374, 375, 376, 377, 378, 379, 380, 381, 382, 383, 384, 385, 386, 387, 388, 389, 390, 391, 392, 393, 394, 395, 396, 397, 398, 399, 400, 401, 402, 403, 404, 405, 406, 407, 408, 409, 410, 411, 412, 413, 414, 415, 416, 417, 418, 419, 420, 421, 422, 423, 424, 425, 426, 427, 428, 429, 430, 431, 432, 433, 434, 435, 436, 437, 438, 439, 440, 441, 442, 443, 444, 445, 446, 447, 448, 449, 450, 451, 452, 453, 454, 455, 456, 457, 458, 459, 460, 461, 462, 463, 464, 465, 466, 467, 468, 469, 470, 471, 472, 473, 474, 475, 476, 477, 478, 479, 480, 481, 482, 483, 484, 485, 486, 487, 488, 489, 490, 491, 492, 493, 494, 495, 496, 497, 498, 499, 500, 501, 502, 503, 504, 505, 506, 507, 508, 509, 510, 511, 512, 513, 514, 515, 516, 517, 518, 519, 520, 521, 522, 523, 524, 525, 526, 527, 528, 529, 530, 531, 532, 533, 534, 535, 536, 537, 538, 539, 540, 541, 542, 543, 544, 545, 546, 547, 548, 549, 550, 551, 552, 553, 554, 555, 556, 557, 558, 559, 560, 561, 562, 563, 564, 565, 566, 567, 568, 569, 570, 571, 572, 573, 574, 575, 576, 577, 578, 579, 580, 581, 582, 583, 584, 585, 586, 587, 588, 589, 590, 591, 592, 593, 594, 595, 596, 597, 598, 599, 600, 601, 602, 603, 604, 605, 606, 607, 608, 609, 610, 611, 612, 613, 614, 615, 616, 617, 618, 619, 620, 621, 622, 623, 624, 625, 626, 627, 628, 629, 630, 631, 632, 633, 634, 635, 636, 637, 638, 639, 640, 641, 642, 643, 644, 645, 646, 647, 648, 649, 650, 651, 652, 653, 654, 655, 656, 657, 658, 659, 660, 661, 662, 663, 664, 665, 666, 667, 668, 669, 670, 671, 672, 673, 674, 675, 676, 677, 678, 679, 680, 681, 682, 683, 684, 685, 686, 687, 688, 689, 690, 691, 692, 693, 694, 695, 696, 697, 698, 699, 700, 701, 702, 703, 704, 705, 706, 707, 708, 709, 710, 711, 712, 713, 714, 715, 716, 717, 718, 719, 720, 721, 722, 723, 724, 725, 726, 727, 728, 729, 730, 731, 732, 733, 734, 735, 736, 737, 738, 739, 740, 741, 742, 743, 744, 745, 746, 747, 748, 749, 750, 751, 752, 753, 754, 755, 756, 757, 758, 759, 760, 761, 762, 763, 764, 765, 766, 767, 768, 769, 770, 771, 772, 773, 774, 775, 776, 777, 778, 779, 780, 781, 782, 783, 784, 785, 786, 787, 788, 789, 790, 791, 792, 793, 794, 795, 796, 797, 798, 799, 800, 801, 802, 803, 804, 805, 806, 807, 808, 809, 810, 811, 812, 813, 814, 815, 816, 817, 818, 819, 820, 821, 822, 823, 824, 825, 826, 827, 828, 829, 830, 831, 832, 833, 834, 835, 836, 837, 838, 839, 840, 841, 842, 843, 844, 845, 846, 847, 848, 849, 850, 851, 852, 853, 854, 855, 856, 857, 858, 859, 860, 861, 862, 863, 864, 865, 866, 867, 868, 869, 870, 871, 872, 873, 874, 875, 876, 877, 878, 879, 880, 881, 882, 883, 884, 885, 886, 887, 888, 889, 890, 891, 892, 893, 894, 895, 896, 897, 898, 899, 900, 901, 902, 903, 904, 905, 906, 907, 908, 909, 910, 911, 912, 913, 914, 915, 916, 917, 918, 919, 920, 921, 922, 923, 924, 925, 926, 927, 928, 929, 930, 931, 932, 933, 934, 935, 936, 937, 938, 939, 940, 941, 942, 943, 944, 945, 946, 947, 948, 949, 950, 951, 952, 953, 954, 955, 956, 957, 958, 959, 960, 961, 962, 963, 964, 965, 966, 967, 968, 969, 970, 971, 972, 973, 974, 975, 976, 977, 978, 979, 980, 981, 982, 983, 984, 985, 986, 987, 988, 989, 990, 991, 992, 993, 994, 995, 996, 997, 998, 999, 1000, 1001, 1002, 1003, 1004, 1005, 1006, 1007, 1008, 1009, 1010, 1011, 1012, 1013, 1014, 1015, 1016, 1017, 1018, 1019, 1020, 1021, 1022, 1023, 1024, 1025, 1026, 1027, 1028, 1029, 1030, 1031, 1032, 1033, 1034, 1035, 1036, 1037, 1038, 1039, 1040, 1041, 1042, 1043, 1044, 1045, 1046, 1047, 1048, 1049, 1050, 1051, 1052, 1053, 1054, 1055, 1056, 1057, 1058, 1059, 1060, 1061, 1062, 1063, 1064, 1065, 1066, 1067, 1068, 1069, 1070, 1071, 1072, 1073, 1074, 1075, 1076, 1077, 1078, 1079, 1080, 1081, 1082, 1083, 1084, 1085, 1086, 1087, 1088, 1089, 1090, 1091, 1092, 1093, 1094, 1095, 1096, 1097, 1098, 1099, 1100, 1101, 1102, 1103, 1104, 1105, 1106, 1107, 1108, 1109, 1110, 1111, 1112, 1113, 1114, 1115, 1116, 1117, 1118, 1119, 1120, 1121, 1122, 1123, 1124, 1125, 1126, 1127, 1128, 1129, 1130, 1131, 1132, 1133, 1134, 1135, 1136, 1137, 1138, 1139, 1140, 1141, 1142, 1143, 1144, 1145, 1146, 1147, 1148, 1149, 1150, 1151, 1152, 1153, 1154, 1155, 1156, 1157, 1158, 1159, 1160, 1161, 1162, 1163, 1164, 1165, 1166, 1167, 1168, 1169, 1170, 1171, 1172, 1173, 1174, 1175, 1176, 1177, 1178, 1179, 1180, 1181, 1182, 1183, 1184, 1185, 1186, 1187, 1188, 1189, 1190, 1191, 1192, 1193, 1194, 1195, 1196, 1197, 1198, 1199, 1200, 1201, 1202, 1203, 1204, 1205, 1206, 1207, 1208, 1209, 1210, 1211, 1212, 1213, 1214, 1215, 1216, 1217, 1218, 1219, 1220, 1221, 1222, 1223, 1224, 1225, 1226, 1227, 1228, 1229, 1230, 1231, 1232, 1233, 1234, 1235, 1236, 1237, 1238, 1239, 1240, 1241, 1242, 1243, 1244, 1245, 1246, 1247, 1248, 1249, 1250, 1251, 1252, 1253, 1254, 1255, 1256, 1257, 1258, 1259, 1260, 1261, 1262, 1263, 1264, 1265, 1266, 1267, 1268, 1269, 1270, 1271, 1272, 1273, 1274, 1275, 1276, 1277, 1278, 1279, 1280, 1281, 1282, 1283, 1284, 1285, 1286, 1287, 1288, 1289, 1290, 1291, 1292, 1293, 1294, 1295, 1296, 1297, 1298, 1299, 1300, 1301, 1302, 1303, 1304, 1305, 1306, 1307, 1308, 1309, 1310, 1311, 1312, 1313, 1314, 1315, 1316, 1317, 1318, 1319, 1320, 1321, 1322, 1323, 1324, 1325, 1326, 1327, 1328, 1329, 1330, 1331, 1332, 1333, 1334, 1335, 1336, 1337, 1338, 1339, 1340, 1341, 1342, 1343, 1344, 1345, 1346, 1347, 1348, 1349, 1350, 1351, 1352, 1353, 1354, 1355, 1356, 1357, 1358, 1359, 1360, 1361, 1362, 1363, 1364, 1365, 1366, 1367, 1368, 1369, 1370, 1371, 1372, 1373, 1374, 1375, 1376, 1377, 1378, 1379, 1380, 1381, 1382, 1383, 1384, 1385, 1386, 1387, 1388, 1389, 1390, 1391, 1392, 1393, 1394, 1395, 1396, 1397, 1398, 1399, 1400, 1401, 1402, 1403, 1404, 1405, 1406, 1407, 1408, 1409, 1410, 1411, 1412, 1413, 1414, 1415, 1416, 1417, 1418, 1419, 1420, 1421, 1422, 1423, 1424, 1425, 1426, 1427, 1428, 1429, 1430, 1431, 1432, 1433, 1434, 1435, 1436, 1437, 1438, 1439, 1440, 1441, 1442, 1443, 1444, 1445, 1446, 1447, 1448, 1449, 1450, 1451, 1452, 1453, 1454, 1455, 1456, 1457, 1458, 1459, 1460, 1461, 1462, 1463, 1464, 1465, 1466, 1467, 1468, 1469, 1470, 1471, 1472, 1473, 1474, 1475, 1476, 1477, 1478, 1479, 1480, 1481, 1482, 1483, 1484, 1485, 1486, 1487, 1488, 1489, 1490, 1491, 1492, 1493, 1494, 1495, 1496, 1497, 1498, 1499, 1500, 1501, 1502, 1503, 1504, 1505, 1506, 1507, 1508, 1509, 1510, 1511, 1512, 1513, 1514, 1515, 1516, 1517, 1518, 1519, 1520, 1521, 1522, 1523, 1524, 1525, 1526, 1527, 1528, 1529, 1530, 1531, 1532, 1533, 1534, 1535, 1536, 1537, 1538, 1539, 1540, 1541, 1542, 1543, 1544, 1545, 1546, 1547, 1548, 1549, 1550, 1551, 1552, 1553, 1554, 1555, 1556, 1557, 1558, 1559, 1560, 1561, 1562, 1563, 1564, 1565, 1566, 1567, 1568, 1569, 1570, 1571, 1572, 1573, 1574, 1575, 1576, 1577, 1578, 1579, 1580, 1581, 1582, 1583, 1584, 1585, 1586, 1587, 1588, 1589, 1590, 1591, 1592, 1593, 1594, 1595, 1596, 1597, 1598, 1599, 1600, 1601, 1602, 1603, 1604, 1605, 1606, 1607, 1608, 1609, 1610, 1611, 1612, 1613, 1614, 1615, 1616, 1617, 1618, 1619, 1620, 1621, 1622, 1623, 1624, 1625, 1626, 1627, 1628, 1629, 1630, 1631, 1632, 1633, 1634, 1635, 1636, 1637, 1638, 1639, 1640, 1641, 1642, 1643, 1644, 1645, 1646, 1647, 1648, 1649, 1650, 1651, 1652, 1653, 1654, 1655, 1656, 1657, 1658, 1659, 1660, 1661, 1662, 1663, 1664, 1665, 1666, 1667, 1668, 1669, 1670, 1671, 1672, 1673, 1674, 1675, 1676, 1677, 1678, 1679, 1680, 1681, 1682, 1683, 1684, 1685, 1686, 1687, 1688, 1689, 1690, 1691, 1692, 1693, 1694, 1695, 1696, 1697, 1698, 1699, 1700, 1701, 1702, 1703, 1704, 1705, 1706, 1707, 1708, 1709, 1710, 1711, 1712, 1713, 1714, 1715, 1716, 1717, 1718, 1719, 1720, 1721, 1722, 1723, 1724, 1725, 1726, 1727, 1728, 1729, 1730, 1731, 1732, 1733, 1734, 1735, 1736, 1737, 1738, 1739, 1740, 1741, 1742, 1743, 1744, 1745, 1746, 1747, 1748, 1749, 1750, 1751, 1752, 1753, 1754, 1755, 1756, 1757, 1758, 1759, 1760, 1761, 1762, 1763, 1764, 1765, 1766, 1767, 1768, 1769, 1770, 1771, 1772, 1773, 1774, 1775, 1776, 1777, 1778, 1779, 1780, 1781, 1782, 1783, 1784, 1785, 1786, 1787, 1788, 1789, 1790, 1791, 1792, 1793, 1794, 1795, 1796, 1797, 1798, 1799, 1800, 1801, 1802, 1803, 1804, 1805, 1806, 1807, 1808, 1809, 1810, 1811, 1812, 1813, 1814, 1815, 1816, 1817, 1818, 1819, 1820, 1821, 1822, 1823, 1824, 1825, 1826, 1827, 1828, 1829, 1830, 1831, 1832, 1833, 1834, 1835, 1836, 1837, 1838, 1839, 1840, 1841, 1842, 1843, 1844, 1845, 1846, 1847, 1848, 1849, 1850, 1851, 1852, 1853, 1854, 1855, 1856, 1857, 1858, 1859, 1860, 1861, 1862, 1863, 1864, 1865, 1866, 1867, 1868, 1869, 1870, 1871, 1872, 1873, 1874, 1875, 1876, 1877, 1878, 1879, 1880, 1881, 1882, 1883, 1884, 1885, 1886, 1887, 1888, 1889, 1890, 1891, 1892, 1893, 1894, 1895, 1896, 1897, 1898, 1899, 1900, 1901, 1902, 1903, 1904, 1905, 1906, 1907, 1908, 1909, 1910, 1911, 1912, 1913, 1914, 1915, 1916, 1917, 1918, 1919, 1920, 1921, 1922, 1923, 1924, 1925, 1926, 1927, 1928, 1929, 1930, 1931, 1932, 1933, 1934, 1935, 1936, 1937, 1938, 1939, 1940, 1941, 1942, 1943, 1944, 1945, 1946, 1947, 1948, 1949, 1950, 1951, 1952, 1953, 1954, 1955, 1956, 1957, 1958, 1959, 1960, 1961, 1962, 1963, 1964, 1965, 1966, 1967, 1968, 1969, 1970, 1971, 1972, 1973, 1974, 1975, 1976, 1977, 1978, 1979, 1980, 1981, 1982, 1983, 1984, 1985, 1986, 1987, 1988, 1989, 1990, 1991, 1992, 1993, 1994, 1995, 1996, 1997, 1998, 1999, 2000, 2001, 2002, 2003, 2004, 2005, 2006, 2007, 2008, 2009, 2010, 2011, 2012, 2013, 2014, 2015, 2016, 2017, 2018, 2019, 2020, 2021, 2022, 2023, 2024, 2025, 2026



SOUTH ELEVATION (CLUB & MOTEL)
BURELLI STREET ASPECT

COLOUR AND MATERIALS SCHEDULE

1 ALUMINIUM CLADDING VITRADUAL (NON COMBUSTIBLE) MONUMENT WALLING	2 OFF FORM CONCRETE FINISH CONCRETE EDGES, & WALLING	3 TIMBER LOOK ALUMINIUM SCREENING GOLDEN OAK SCREENING, LOUVRES	4 SHOP FRONT GLAZING CLEAR GLAZING ELEMENTS AND BALUSTRADES	5 GLAZING TINTED THERMALLY VENTED DOUBLE GLAZING PANELS (INTERNAL TIMBER BLINDS)	6 ALUMINUM DURETEC POWDERCOAT MONUMENT DOOR AND WINDOW FRAMES, HANDRAILS, LOUVRES, SECURITY SHUTTERS, SLAB EDGES & SCREENING	7 SANDSTONE CLADDING CLADDING WITH JOINTS	8 STANDING SEAM COLORBOND CLADDING WITH JOINTS (NON COMBUSTIBLE) MONUMENT	9 ALUMINIUM PERFORATED SCREEN DURATEC FINE GOLD PEARL KINETIC
10 METALLIC CLADDING ELECTRO NEW COPPER KINETIC STEEL FRAME, BEAM, SLAB EDGES, LOUVRES, ROOF, AWNING & SUNSHADES	11 TIMBER WALL CLADDING GOLDEN OAK WALLING & AWNING	12 WALL CLADDING BLUE STONE GRANITE WALLING	13 OFF FORM CONCRETE FINISH CONCRETE EDGES, & WALLING					

E	03-12-24	REISSUED FOR DA		
D	21-10-24	REISSUED FOR DA		
C	06-08-24	REISSUED FOR DA		
B	01-09-23	ISSUED FOR DA		
A	25-11-22	ISSUED FOR DRP		
ISSUE	DATE	DESCRIPTION	initials	chkd
sign				date

These drawings are not to be scaled. Figured dimensions shall be used in all cases.

COPYRIGHT - These drawings remain the exclusive copyright of ADM Architects. Reproductions in any form whether electronic, digital or otherwise shall not be allowed except by express permission granted in writing by ADM Architects.

FIGURED DIMENSIONS - These drawings are not to be scaled. Figured dimensions shall be used in all cases.

DISCREPANCIES IN DIMENSIONS/POSITIONS/LOCATIONS/FINISHES - The Contractor is to verify any dimensional, location or finish discrepancy with ADM Architects prior to any physical construction or setting out so that ADM Architects is given the opportunity to resolve potential discrepancies or conflicts in sufficient time without causing abortive work. The Contractor shall be responsible for notifying ADM Architects of any such discrepancy or conflict that may arise on site.

COORDINATION OF WORKS - These drawings are to be read in conjunction with the full set of consultant's drawings, specifications, reports and DA conditions.

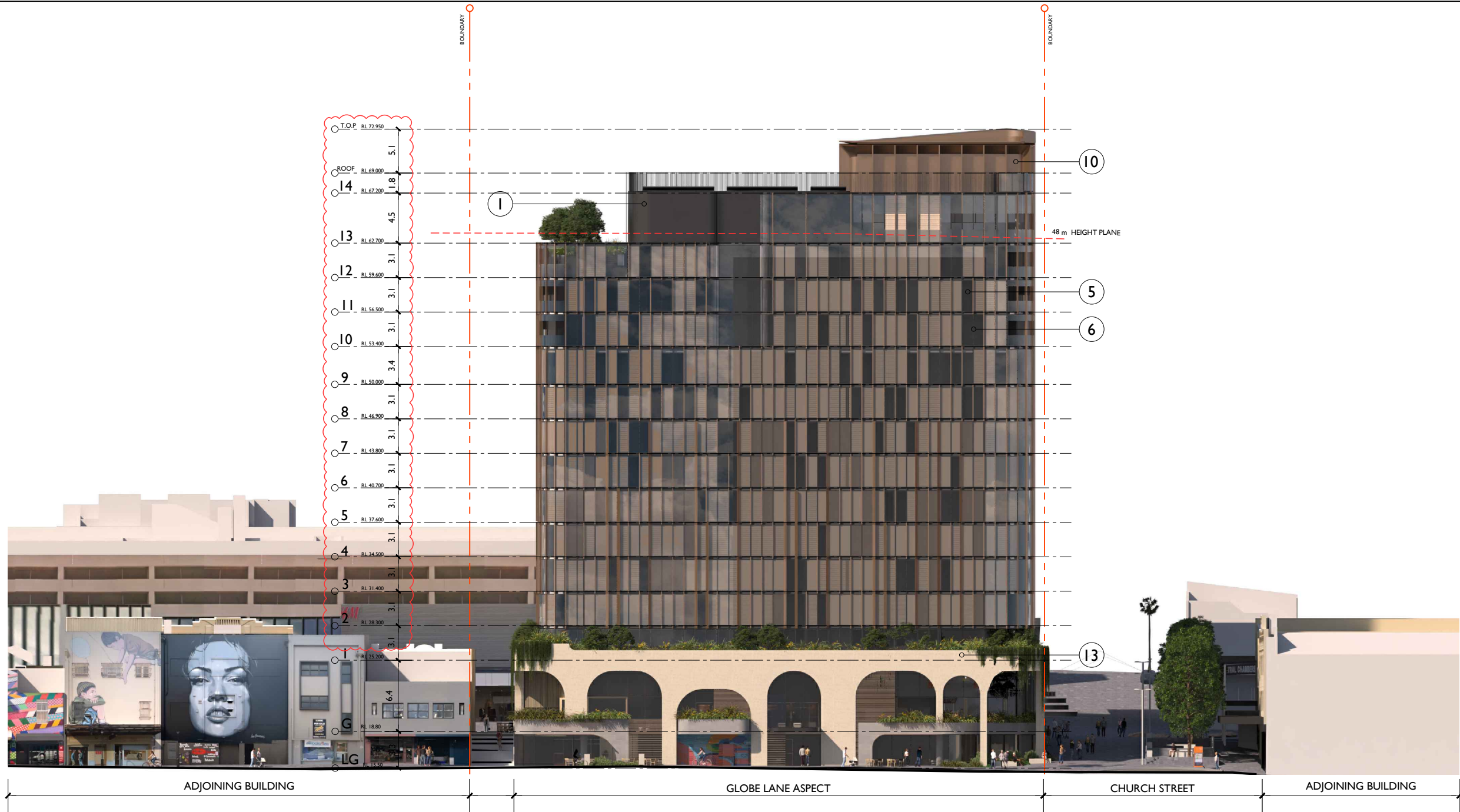
NOMINATED ARCHITECT - The nominated Architect for ADM Projects (Australia) Pty Ltd T/A ADM Architects is Angelo Di Martino ARB No.7608



Project
PROPOSED 3-STAGE MIXED USE
DEVELOPMENT COMPRISING OF
HOTEL, OFFICE, MOTEL AND CLUB
OVER BASEMENT PARKING
for
171 CROWN PTY LTD
at
80-82 CHURCH & 163-171 CROWN ST
WOLLONGONG

scale	1:200 @ A1	1:400 @ A3
date	DECEMBER	2024
drawn	LGD	SJ HR chkd ADM
drawing	DEVELOPMENT APPLICATION	SOUTH ELEVATION 01
Project No.	2021-15	Drawing No. A-204
issue		E

NOT FOR CONSTRUCTION



SOUTH ELEVATION (HOTEL)
GLOBE LANE ASPECT

COLOUR AND MATERIALS SCHEDULE

1 ALUMINIUM CLADDING VITRADUAL (NON COMBUSTIBLE) MONUMENT WALLING	2 OFF FORM CONCRETE FINISH CONCRETE EDGES, & WALLING	3 TIMBER LOOK ALUMINIUM SCREENING GOLDEN OAK SCREENING, LOUVRES	4 SHOP FRONT GLAZING CLEAR GLAZING ELEMENTS AND BALUSTRADES	5 GLAZING TINTED THERMALLY VENTED DOUBLE GLAZING PANELS (INTERNAL TIMBER BLINDS)	6 ALUMINUM DURETEC POWDERCOAT MONUMENT DOOR AND WINDOW FRAMES, HANDRAILS, LOUVRES, SECURITY SHUTTERS, SLAB EDGES & SCREENING	7 SANDSTONE CLADDING CLADDING WITH JOINTS	8 STANDING SEAM COLORBOND CLADDING WITH JOINTS (NON COMBUSTIBLE) MONUMENT	9 ALUMINIUM PERFORATED SCREEN DURATEC FINE GOLD PEARL KINETIC
10 METALLIC CLADDING ELECTRO NEW COPPER KINETIC STEEL FRAME, BEAM, SLAB EDGES, LOUVRES, ROOF, AWNING & SUNSHADES	11 TIMBER WALL CLADDING GOLDEN OAK WALLING & AWNING	12 WALL CLADDING BLUE STONE GRANITE WALLING	13 OFF FORM CONCRETE FINISH CONCRETE EDGES, & WALLING					

sign	date
21-10-24 06-08-24 01-09-23 25-11-22	REISSUED FOR DA REISSUED FOR DA ISSUED FOR DA ISSUED FOR DRP
ISSUE	DATE
DESCRIPTION	initials chkd
These drawings are not to be scaled. Figured dimensions shall be used in all cases.	

COPYRIGHT - These drawings remain the exclusive copyright of ADM Architects. Reproductions in any form whether electronic, digital or otherwise shall not be allowed except by express permission granted in writing by ADM Architects.

FIGURED DIMENSIONS - These drawings are not to be scaled. Figured dimensions shall be used in all cases.

DISCREPANCIES IN DIMENSIONS/POSITIONS/LOCATIONS/FINISHES The Contractor is to verify any dimensional, location or finish discrepancy with ADM Architects prior to any physical construction or setting out so that ADM Architects is given the opportunity to resolve potential discrepancies or conflicts in sufficient time without causing abortive work. The Contractor shall be responsible for notifying ADM Architects of any such discrepancy or conflict that may arise on site.

COORDINATION OF WORKS - These drawings are to be read in conjunction with the full set of consultant's drawings, specifications, reports and DA conditions.

NOMINATED ARCHITECT - The nominated Architect for ADM Projects (Australia) Pty Ltd T/A ADM Architects is Angelo Di Martino ARB No.7608



adm
ARCHITECTS

94 Kereba St, Wollongong NSW 2500 PO Box 3561 Wollongong
ph: 02 4228 8400 fax: 02 4228 8455 www.admarchitects.com.au

JACKSON TEECE

Sydney: Level 9, Pier B, 23 Hickson Road
Sydney, NSW 2000 Australia
T +61 2 9260 1722
F +61 2 9260 1780
jty@jacksonteece.com

Brisbane: Level 20, 244 Queen Street
Brisbane, QLD 4000 Australia
T +61 7 3226 2771
F +61 7 3226 2186
brisl@jacksonteece.com

Melbourne: Level 10, 244 Queen Street
Melbourne, VIC 3000 Australia
T +61 3 9581 8770
F +61 3 9581 8770
mel@jacksonteece.com

Nominated Architects:
Darren Barker (B152), John Goss (B179), Daniel Hutton (B110)

Concepts and information contained in this drawing are copyright and may not be reproduced in whole or part or by any medium, without the written permission of Jackson Teece. Do not scale this drawing, use figured dimensions only. Verify all project dimensions before commencing on-site work or off-site fabrication. Notify Jackson Teece of any discrepancies and seek instructions.

Project
PROPOSED 3-STAGE MIXED USE
DEVELOPMENT COMPRISING OF
HOTEL, OFFICE, MOTEL AND CLUB
OVER BASEMENT PARKING
for
171 CROWN PTY LTD
at
80-82 CHURCH & 163-171 CROWN ST
WOLLONGONG

scale	1:200 @ A1	1:400 @ A3
date	OCTOBER 2024	
drawn	LGD SJ HR chkd	ADM
drawing	DEVELOPMENT APPLICATION	
	SOUTH ELEVATION 02	
Project No.	2021-15	Drawing No.
		A-205
issue		D

NOT FOR CONSTRUCTION



COLOUR AND MATERIALS SCHEDULE

1 ALUMINIUM CLADDING VITRADUAL (NON COMBUSTIBLE) MONUMENT WALLING	2 OFF FORM CONCRETE FINISH CONCRETE EDGES, & WALLING	3 TIMBER LOOK ALUMINIUM SCREENING GOLDEN OAK SCREENING, LOUVRES	4 SHOP FRONT GLAZING CLEAR GLAZING ELEMENTS AND BALUSTRADES	5 GLAZING TINTED THERMALLY VENTED DOUBLE GLAZING PANELS (INTERNAL TIMBER BLINDS)	6 ALUMINUM DURETEC POWDERCOAT MONUMENT DOOR AND WINDOW FRAMES, HANDRAILS, LOUVRES, SECURITY SHUTTERS, SLAB EDGES & SCREENING	7 SANDSTONE CLADDING CLADDING WITH JOINTS	8 STANDING SEAM COLORBOND CLADDING CLADDING WITH JOINTS (NON COMBUSTIBLE) MONUMENT	9 ALUMINIUM PERFORATED SCREEN DURATEC FINE GOLD PEARL KINETIC
10 METALLIC CLADDING ELECTRO NEW COPPER KINETIC STEEL FRAME, BEAM, SLAB EDGES, LOUVRES, ROOF, AWNING & SUNSHADES	11 TIMBER WALL CLADDING GOLDEN OAK WALLING & AWNING	12 WALL CLADDING BLUE STONE GRANITE WALLING	13 OFF FORM CONCRETE FINISH CONCRETE EDGES, & WALLING					

E	03-12-24	REISSUED FOR DA		
D	21-10-24	REISSUED FOR DA		
C	06-08-24	REISSUED FOR DA		
B	01-09-23	ISSUED FOR DA		
A	25-11-22	ISSUED FOR DRP		
ISSUE	DATE	DESCRIPTION	initials	chkd
sign			date	
These drawings are not to be scaled. Figured dimensions shall be used in all cases.				

COPYRIGHT - These drawings remain the exclusive copyright of ADM Architects. Reproductions in any form whether electronic, digital or otherwise shall not be allowed except by express permission granted in writing by ADM Architects.

FIGURED DIMENSIONS - These drawings are not to be scaled. Figured dimensions shall be used in all cases.

DISCREPANCIES IN DIMENSIONS/POSITIONS/LOCATIONS/FINISHES The Contractor is to verify any dimensional, location or finish discrepancy with ADM Architects prior to any physical construction or setting out so that ADM Architects is given the opportunity to resolve potential discrepancies or conflicts in sufficient time without causing abortive work. The Contractor shall be responsible for notifying ADM Architects of any such discrepancy or conflict that may arise on site.

COORDINATION OF WORKS - These drawings are to be read in conjunction with the full set of consultant's drawings, specifications, reports and DA conditions.

NOMINATED ARCHITECT - The nominated Architect for ADM Projects (Australia) Pty Ltd T/A ADM Architects is Angelo Di Martino ARB No.7608



adm
ARCHITECTS

94 Kereba St, Wollongong NSW 2500 PO Box 3561 Wollongong
ph: 02 4228 6400 fax: 02 4228 6455 www.admarchitects.com.au

JACKSON TEECE

Sydney
Level 1, Pier 8/8, 22 Hickson Road
Sydney, NSW 2000 Australia
T +61 2 9260 1722
F +61 2 9260 1780
jty@jacksonteece.com

Brisbane
Level 20, 244 Queen Street
Brisbane, QLD 4000 Australia
T +61 7 3226 2771
F +61 7 3226 2186
brisbane@jacksonteece.com

Melbourne
Level 10, 244 Queen Street
Melbourne, VIC 3000 Australia
T +61 3 9260 1722
F +61 3 9260 1780
melbourne@jacksonteece.com

Nominated Architects
Darren Barker (B192), John Goss (B179), Daniel Hutton (B116)

Concepts and information contained in this drawing are copyright and may not be reproduced in whole or part or by any medium, without the written permission of Jackson Teece. Do not scale this drawing, use figured dimensions only. Verify all project dimensions before commencing on-site work or off-site fabrication. Notify Jackson Teece of any discrepancies and seek instructions.

Project
PROPOSED 3-STAGE MIXED USE
DEVELOPMENT COMPRISING OF
HOTEL, OFFICE, MOTEL AND CLUB
OVER BASEMENT PARKING
for
171 CROWN PTY LTD
at
80-82 CHURCH & 163-171 CROWN ST
WOLLONGONG

scale 1:200 @ A1 1:400 @ A3
date DECEMBER 2024
drawn LGD SJ HR chkd ADM
drawing
DEVELOPMENT APPLICATION
WEST ELEVATION
Project No. 2021-15
Drawing No. A-206
issue E

NOT FOR CONSTRUCTION



SOUTH ELEVATION (OFFICE BUILDING)

COLOUR AND MATERIALS SCHEDULE

1 ALUMINIUM CLADDING VITRADUAL (NON COMBUSTIBLE) MONUMENT WALLING	2 OFF FORM CONCRETE FINISH CONCRETE EDGES, & WALLING	3 TIMBER LOOK ALUMINIUM SCREENING GOLDEN OAK SCREENING, LOUVRES	4 SHOP FRONT GLAZING CLEAR GLAZING ELEMENTS AND BALUSTRADES	5 GLAZING TINTED THERMALLY VENTED DOUBLE GLAZING PANELS (INTERNAL TIMBER BLINDS)	6 ALUMINUM DURETEC POWDERCOAT MONUMENT DOOR AND WINDOW FRAMES, HANDRAILS, LOUVRES, SECURITY SHUTTERS, SLAB EDGES & SCREENING	7 SANDSTONE CLADDING CLADDING WITH JOINTS	8 STANDING SEAM COLORBOND CLADDING WITH JOINTS (NON COMBUSTIBLE) MONUMENT	9 ALUMINIUM PERFORATED SCREEN DURATEC FINE GOLD PEARL KINETIC
10 METALLIC CLADDING ELECTRO NEW COPPER KINETIC STEEL FRAME, BEAM, SLAB EDGES, LOUVRES, ROOF, AWNING & SUNSHADES	11 TIMBER WALL CLADDING GOLDEN OAK WALLING & AWNING	12 WALL CLADDING BLUE STONE GRANITE WALLING	13 OFF FORM CONCRETE FINISH CONCRETE EDGES, & WALLING					

A	21-10-24	REISSUED FOR DA		
ISSUE	DATE	DESCRIPTION	initials	chkd
sign			date	
These drawings are not to be scaled. Figured dimensions shall be used in all cases.				

COPYRIGHT - These drawings remain the exclusive copyright of ADM Architects. Reproductions in any form whether electronic, digital or otherwise shall not be allowed except by express permission granted in writing by ADM Architects.

FIGURED DIMENSIONS - These drawings are not to be scaled. Figured dimensions shall be used in all cases.

DISCREPANCIES IN DIMENSIONS/POSITIONS/LOCATIONS/FINISHES The Contractor is to verify any dimensional, location or finish discrepancy with ADM Architects prior to any physical construction or setting out so that ADM Architects is given the opportunity to resolve potential discrepancies or conflicts in sufficient time without causing abortive work. The Contractor shall be responsible for notifying ADM Architects of any such discrepancy or conflict that may arise on site.

COORDINATION OF WORKS - These drawings are to be read in conjunction with the full set of consultant's drawings, specifications, reports and DA conditions.

NOMINATED ARCHITECT - The nominated Architect for ADM Projects (Australia) Pty Ltd T/A ADM Architects is Angelo Di Martino ARB No.7608



JACKSON TEECE

Sydney
Level 1, Pier 6/6, 22 Hickson Road
Sydney, NSW 2000 Australia
T +61 2 9260 1772
F +61 2 9260 1780
sydney@jacksonteece.com

Brisbane
Level 20, 344 Queen Street
Brisbane, QLD 4000 Australia
T +61 7 3226 1772
F +61 7 3226 1780
brisbane@jacksonteece.com

Melbourne
Level 1, 100 Collins Street
Melbourne, VIC 3000 Australia
T +61 3 9260 1772
F +61 3 9260 1780
melbourne@jacksonteece.com

Nominated Architects
Darren Barker (0192), John Gove (0195), Daniel Hutton (0110)

Concepts and information contained in this drawing are copyright and may not be reproduced in whole or part or by any medium, without the written permission of Jackson Teece. Do not scale this drawing, use figured dimensions only. Verify all project dimensions before commencing on-site work or off-site fabrication. Notify Jackson Teece of any discrepancies and seek instructions.

Project
PROPOSED 3-STAGE MIXED USE
DEVELOPMENT COMPRISING OF
HOTEL, OFFICE, MOTEL AND CLUB
OVER BASEMENT PARKING
for
171 CROWN PTY LTD
at
80-82 CHURCH & 163-171 CROWN ST
WOLLONGONG

scale	1:200 @ A1	1:400 @ A3
date	OCTOBER 2024	
drawn	LGD SJ HR chkd	ADM
drawing	DEVELOPMENT APPLICATION SOUTH ELEVATION 03	
Project No.	2021-15	Drawing No.
		A-206a
issue		A

NOT FOR CONSTRUCTION

BURELLI STREET

CROWN STREET MALL

BURELLI STREET

CLUB/MOTEL

OFFICE BUILDING

GLOBE LANE

HOTEL

CROWN STREET MALL

SECTION A-A

E	03-12-24	REISSUED FOR DA		
D	21-10-24	REISSUED FOR DA		
C	06-08-24	REISSUED FOR DA		
B	01-09-23	ISSUED FOR DA		
A	25-11-22	ISSUED FOR DRP		
ISSUE	DATE	DESCRIPTION	initials	chkd

sign date
These drawings are not to be scaled. Figured dimensions shall be used in all cases.

COPYRIGHT - These drawings remain the exclusive copyright of ADM Architects. Reproductions in any form whether electronic, digital or otherwise shall not be allowed except by express permission granted in writing by ADM Architects.
FIGURED DIMENSIONS - These drawings are not to be scaled. Figured dimensions shall be used in all cases.
DISCREPANCIES IN DIMENSIONS/POSITIONS/LOCATIONS/FINISHES The Contractor is to verify any dimensional, location or finish discrepancy with ADM Architects prior to any physical construction or setting out so that ADM Architects is given the opportunity to resolve potential discrepancies or conflicts in sufficient time without causing abortive work. The Contractor shall be responsible for notifying ADM Architects of any such discrepancy or conflict that may arise on site.
COORDINATION OF WORKS - These drawings are to be read in conjunction with the full set of consultant's drawings, specifications, reports and DA conditions.
NOMINATED ARCHITECT - The nominated Architect for ADM Projects (Australia) Pty Ltd T/A ADM Architects is Angelo Di Martino ARB No.7608



adm
ARCHITECTS
94 Kerebia St, Wollongong NSW 2500 PO Box 3361 Wollongong
ph: 02 4228 8400 fax: 02 4228 8455 www.admarchitects.com.au

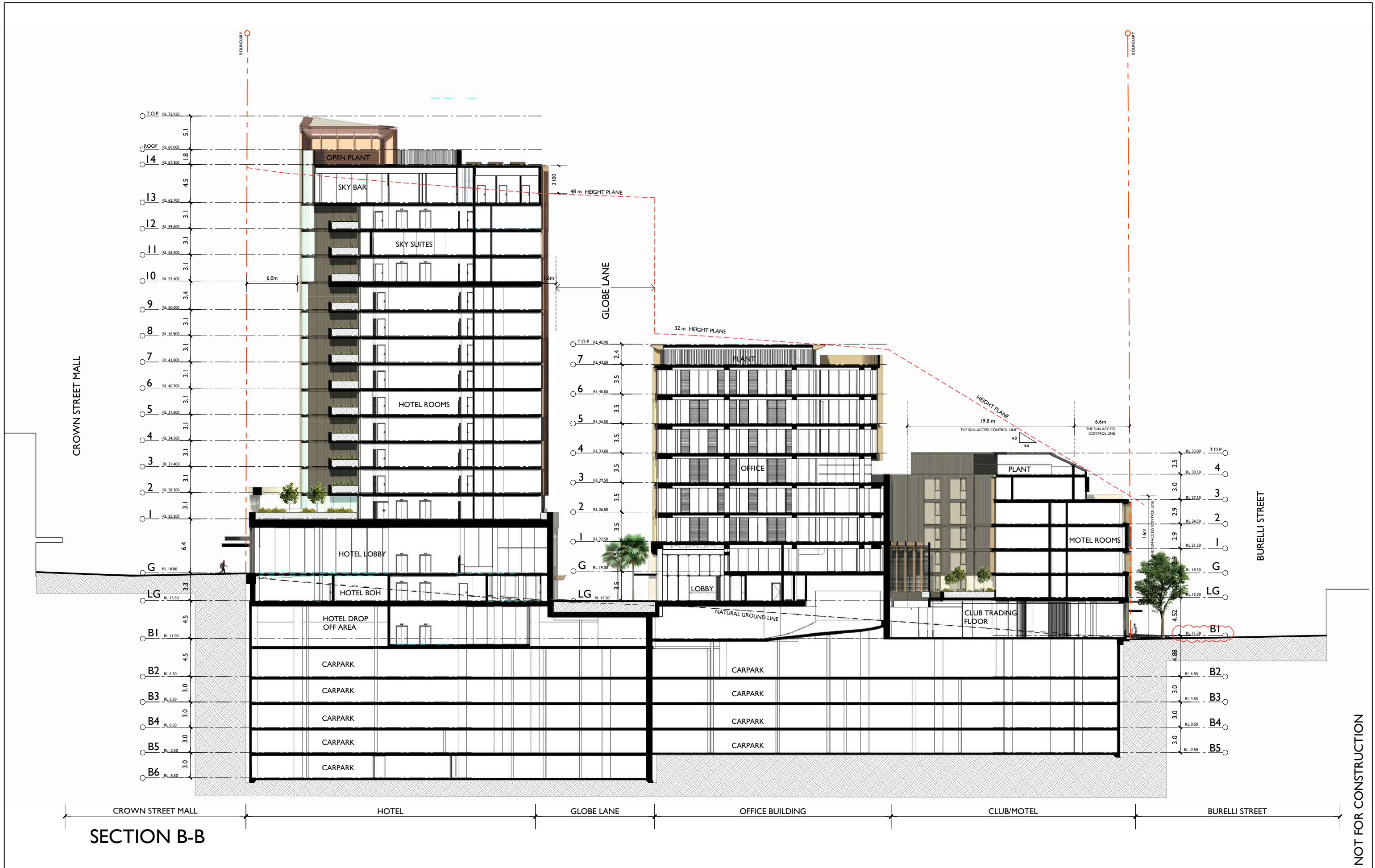
JACKSON TEECE

Sydney: Level 1, Pier 8/8, 22 Hickson Road
Sydney, NSW 2000 Australia
T +61 2 9260 1722
F +61 2 9260 1788
jteece@jacksonteece.com.au
Brisbane: Level 20, 244 Queen Street
Brisbane, QLD 4000 Australia
T +61 7 3206 2771
F +61 7 3206 2386
brisbane@jacksonteece.com.au
Nominated Architects
Darren Barber (B152), John Goss (B795), Daniel Hudson (B116)
Concepts and information contained in this drawing are copyright and may not be reproduced in whole or part or by any medium, without the written permission of Jackson Teece. Do not scale the drawing, use figured dimensions only. Verify all project dimensions before commencing on-site work or off-site fabrication. Notify Jackson Teece of any discrepancies and seek instructions.

Project
PROPOSED 3-STAGE MIXED USE
DEVELOPMENT COMPRISING OF
HOTEL, OFFICE, MOTEL AND CLUB
OVER BASEMENT PARKING
for
171 CROWN PTY LTD
at
80-82 CHURCH & 163-171 CROWN ST
WOLLONGONG

scale 1:200 @ A1 1:400 @ A3
date DECEMBER 2024
drawn LGD SJ HR chkd ADM
drawing
DEVELOPMENT APPLICATION
SECTION A-A
Project No. 2021-15
Drawing No. A-207
issue E

NOT FOR CONSTRUCTION



E	03-12-24	REISSUED FOR DA		
D	21-10-24	REISSUED FOR DA		
C	06-08-24	REISSUED FOR DA		
B	01-09-23	ISSUED FOR DA		
A	25-11-22	ISSUED FOR DRP		
ISSUE	DATE	DESCRIPTION	initials	chkd
sign			date	
* These drawings are not to be scaled. Figured dimensions shall be used in all cases.				

COPYRIGHT - These drawings remain the exclusive copyright of ADM Architects. Reproductions in any form whether electronic, digital or otherwise shall not be allowed except by express permission granted in writing by ADM Architects.

FIGURED DIMENSIONS - These drawings are not to be scaled. Figured dimensions shall be used in all cases.

DISCREPANCIES IN DIMENSIONS/POSITIONS/LOCATIONS/FINISHES The Contractor is to verify any dimensional, location or finish discrepancy with ADM Architects prior to any physical construction or setting out so that ADM Architects is given the opportunity to resolve potential discrepancies or conflicts in sufficient time without causing abortive work. The Contractor shall be responsible for notifying ADM Architects of any such discrepancy or conflict that may arise on site.

COORDINATION OF WORKS - These drawings are to be read in conjunction with the full set of consultant's drawings, specifications, reports and DA conditions.

NOMINATED ARCHITECT - The nominated Architect for ADM Projects (Australia) Pty Ltd T/A ADM Architects is Angelo Di Martino ARB No.7608



adm
ARCHITECTS

94 Kembla St, Wollongong NSW 2500 PO Box 3561 Wollongong
ph: 02 4228 8400 fax: 02 4228 8455 www.admarchitects.com.au

JACKSON TEECE

Sydney: Level 1, War B, 22 Hickson Road
Sydney, NSW 2000 Australia
T +61 2 9260 1722
F +61 2 9260 1788
jteece@jacksonteece.com

Brisbane: Level 20, 244 Queen Street
Brisbane, QLD 4000 Australia
T +61 7 3226 2771
F +61 7 3226 2386
brisbane@jacksonteece.com

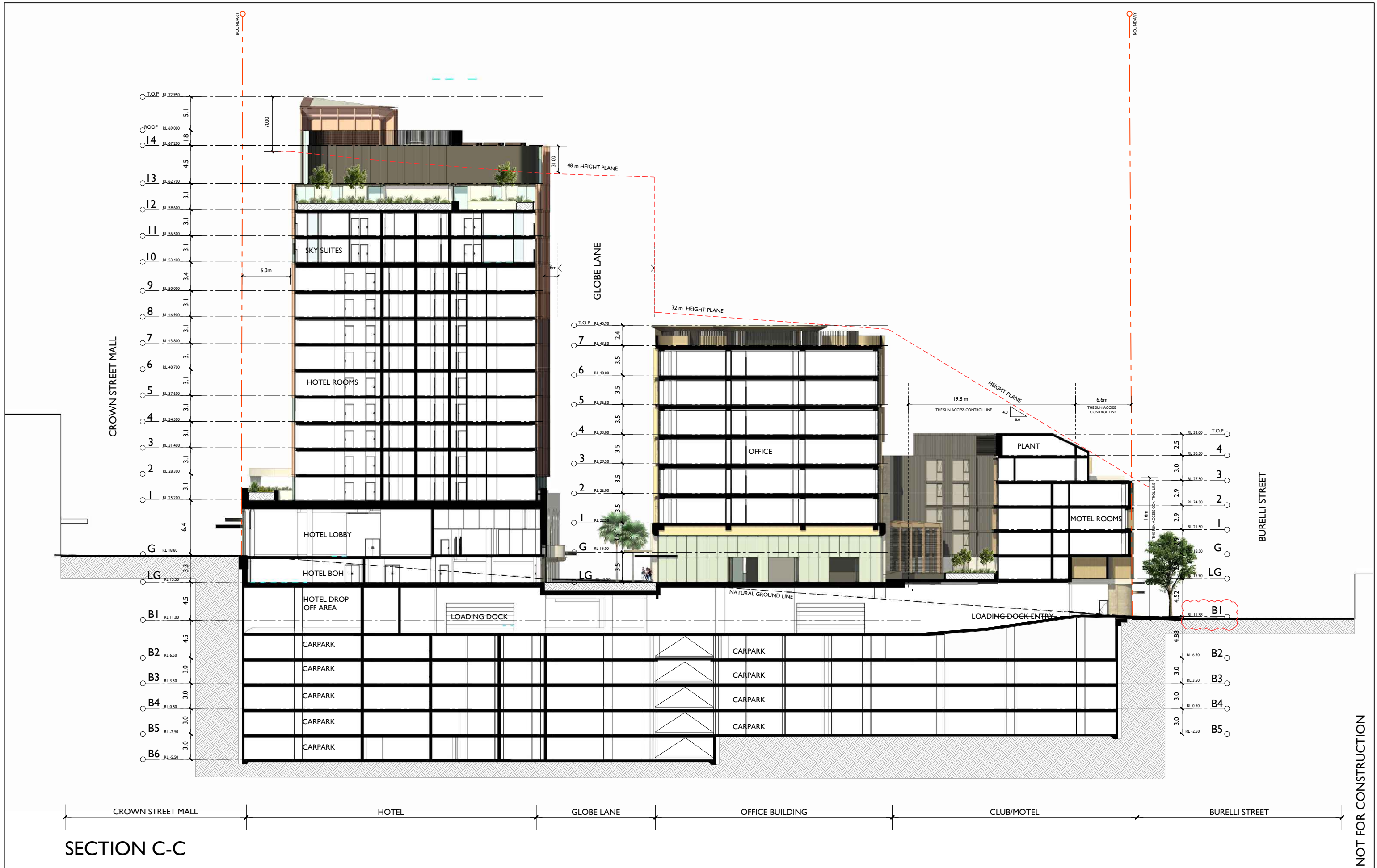
Melbourne: Jackson Teece Cheeseman
1888 Pty Ltd
Trading as Jackson Teece
ADA 15 988 837 200

Nominated Architects:
Darren Barker (B152), John Goss (B176), Daniel Hudson (B116)

Concepts and information contained in this drawing are copyright and may not be reproduced in whole or part or by any medium, without the written permission of Jackson Teece. Do not scale this drawing, use figured dimensions only. Verify all project dimensions before commencing on-site work or off-site fabrication. Notify Jackson Teece of any discrepancies and seek instructions.

Project
PROPOSED 3-STAGE MIXED USE
DEVELOPMENT COMPRISING OF
HOTEL, OFFICE, MOTEL AND CLUB
OVER BASEMENT PARKING
for
171 CROWN PTY LTD
at
80-82 CHURCH & 163-171 CROWN ST
WOLLONGONG

scale 1:200 @ A1 1:400 @ A3
date DECEMBER 2024
drawn LGD SJ HR chkd ADM
drawing
DEVELOPMENT APPLICATION
SECTION B-B
Project No.
2021-15
Drawing No.
A-208
issue
E



E D C B A	03-12-24	REISSUED FOR DA		
	21-10-24	REISSUED FOR DA		
	06-08-24	REISSUED FOR DA		
	01-09-23	ISSUED FOR DA		
	25-11-22	ISSUED FOR DRP		
ISSUE	DATE	DESCRIPTION	initials	chkd
sign _____ date _____				
These drawings are not to be scaled. Figured dimensions shall be used in all cases.				

COPYRIGHT - These drawings remain the exclusive copyright of ADM Architects. Reproductions in any form whether electronic, digital or otherwise shall not be allowed except by express permission granted in writing by ADM Architects.

FIGURED DIMENSIONS - These drawings are not to be scaled. Figured dimensions shall be used in all cases.

DISCREPANCIES IN DIMENSIONS/POSITIONS/LOCATIONS/FINISHES The Contractor is to verify any dimensional, location or finish discrepancy with ADM Architects prior to any physical construction or setting out so that ADM Architects is given the opportunity to resolve potential discrepancies or conflicts in sufficient time without causing abortive work. The Contractor shall be responsible for notifying ADM Architects of any such discrepancy or conflict that may arise on site.

COORDINATION OF WORKS - These drawings are to be read in conjunction with the full set of consultant's drawings, specifications, reports and DA conditions.

NOMINATED ARCHITECT - The nominated architect for ADM Projects (Australia) Pty Ltd T/A ADM Architects is Angelo Di Martino ARB No.7608



adm
ARCHITECTS

94 Kembla St, Wollongong NSW 2500 PO Box 3561 Wollongong
ph: 02 4228 8400 fax: 02 4228 8455 www.admarchitects.com.au

JACKSON TEECE

Sydney: Level 1, Plot 8/9, 22 Hickson Road, Sydney, NSW 2000 Australia
T +61 2 9286 1722
F +61 2 9286 1789
sydney@jacksonteece.com

Brisbane: Level 20, 244 Queen Street, Brisbane, QLD 4000 Australia
T +61 7 3206 2771
F +61 7 3206 2880
brisbane@jacksonteece.com

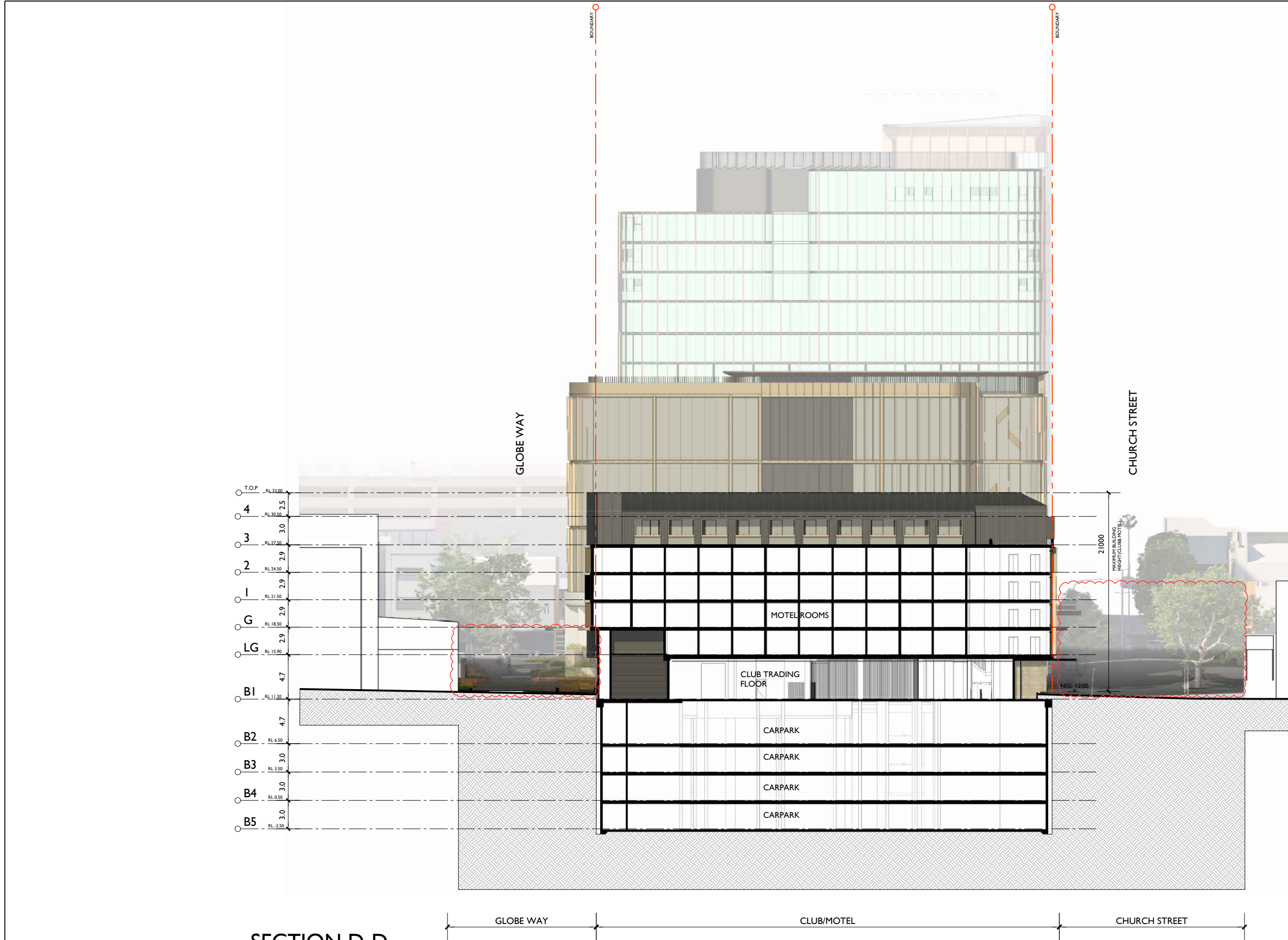
Melbourne: Level 20, 244 Queen Street, Melbourne, VIC 3000 Australia
T +61 3 9593 8720
F +61 3 9593 8720
melbourne@jacksonteece.com

Nominated Architects:
Darren Barker (B152), John Goss (B179), Daniel Hudson (B116)

Concepts and information contained in this drawing are copyright and may not be reproduced in whole or part or by any medium, without the written permission of Jackson Teece. Do not scale the drawing, use figured dimensions only. Verify all project dimensions before commencing on-site work or off-site fabrication. Notify Jackson Teece of any discrepancies and seek instructions.

Project
PROPOSED 3-STAGE MIXED USE
DEVELOPMENT COMPRISING OF
HOTEL, OFFICE, MOTEL AND CLUB
OVER BASEMENT PARKING
for
171 CROWN PTY LTD
at
80-82 CHURCH & 163-171 CROWN ST
WOLLONGONG

scale 1:200 @ A1 1:400 @ A3
date DECEMBER 2024
drawn LGD SJ HR chkd ADM
drawing
DEVELOPMENT APPLICATION
SECTION C-C
Project No. 2021-15
Drawing No. A-209
issue E



SECTION D-D

D	21-10-24	REISSUED FOR DA		
C	06-08-24	REISSUED FOR DA		
B	01-09-23	ISSUED FOR DA		
A	25-11-22	ISSUED FOR DRP		
ISSUE	DATE	DESCRIPTION	initials	date
sign				
date				
* These drawings are not to be scaled. Figured dimensions shall be used in all cases.				

COPYRIGHT - These drawings remain the exclusive copyright of ADM Architects. Reproductions in any form whether electronic, digital or otherwise shall not be allowed except by express permission granted in writing by ADM Architects.

FIGURED DIMENSIONS - These drawings are not to be scaled. Figured dimensions shall be used in all cases.

DISCREPANCIES IN DIMENSIONS/POSITIONS/LOCATIONS/FINISHES The Contractor is to verify any dimensional, location or finish discrepancy with ADM Architects prior to any physical construction or setting out so that ADM Architects is given the opportunity to resolve potential discrepancies or conflicts in sufficient time without causing abortive work. The Contractor shall be responsible for notifying ADM Architects of any such discrepancy or conflict that may arise on site.

COORDINATION OF WORKS - These drawings are to be read in conjunction with the full set of consultant's drawings, specifications, reports and DA conditions.

NOMINATED ARCHITECT - The nominated Architect for ADM Projects (Australia) Pty Ltd T/A ADM Architects is Angelo Di Martino ARB No.7608



adm
ARCHITECTS

94 Kembla St, Wollongong NSW 2500 PO Box 3561 Wollongong
ph: 02 4228 8400 fax: 02 4228 6455 www.admarchitects.com.au

JACKSON TEECE

Sydney Unit 1, Pier 6/2, 23 Hickson Road Sydney, NSW 2000 Australia
t +61 2 9286 2722 f +61 2 9286 1888
sydney@jacksonteece.com

Brisbane Unit 20, 244 Queen Street Brisbane, QLD 4000 Australia
t +61 7 3206 2771 f +61 7 3206 2880
brisbane@jacksonteece.com

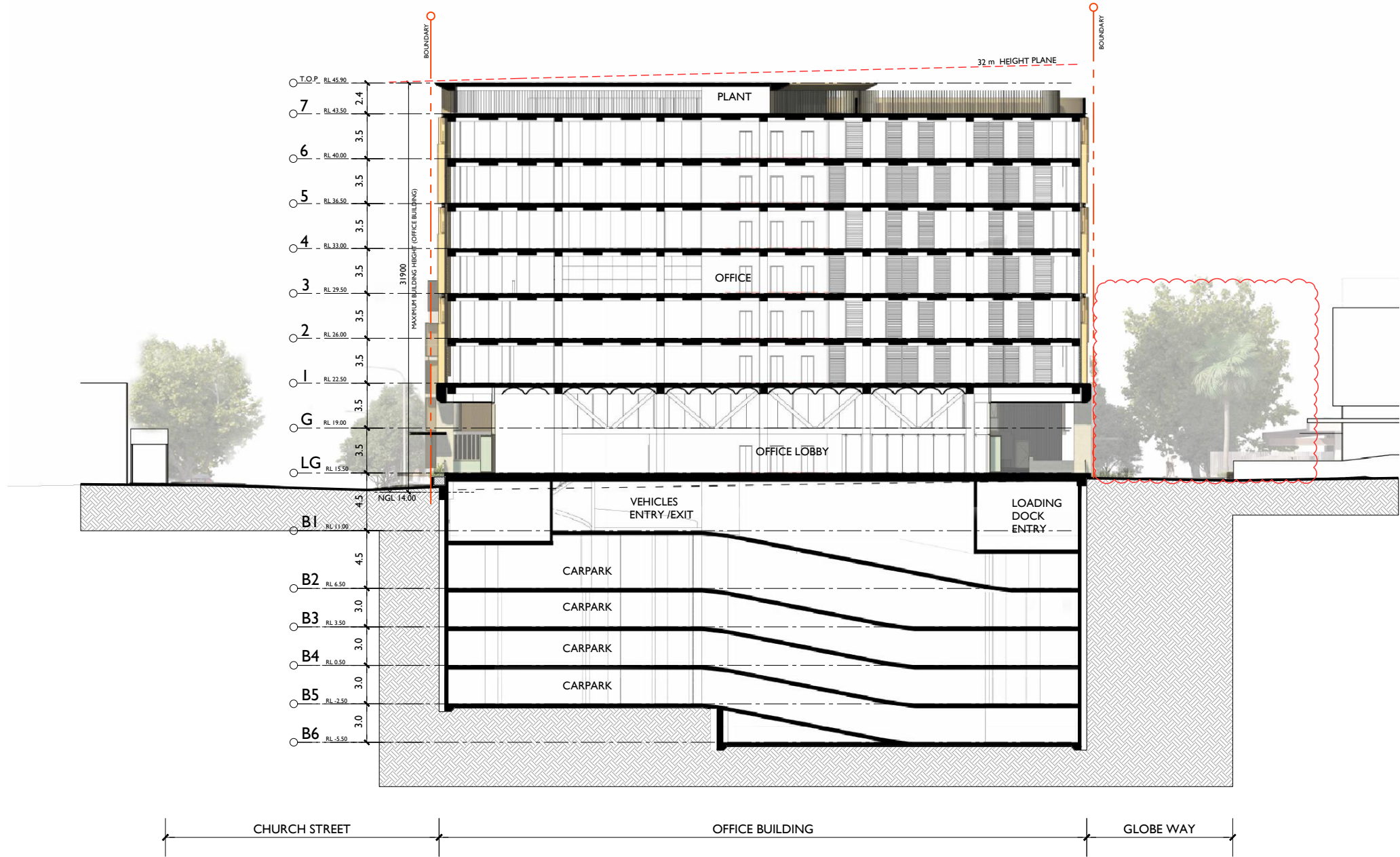
Nominated Architects
Darren Barker (B192), John Goss (B795), Daniel Hudson (B116)

Concepts and information contained in this drawing are copyright and may not be reproduced in whole or part or by any medium, without the written permission of Jackson Teece. Do not scale this drawing, use figured dimensions only. Verify all project dimensions before commencing on-site work or off-site fabrication. Notify Jackson Teece of any discrepancies and seek instructions.

Project
PROPOSED 3-STAGE MIXED USE
DEVELOPMENT COMPRISING OF
HOTEL, OFFICE, MOTEL AND CLUB
OVER BASEMENT PARKING
for
171 CROWN PTY LTD
at
80-82 CHURCH & 163-171 CROWN ST
WOLLONGONG

scale	1:200 @ A1	1:400 @ A3
date	OCTOBER 2024	
drawn	LGD SJ HR chkd	ADM
drawing	DEVELOPMENT APPLICATION	
	SECTION D-D	
Project No.	2021-15	Drawing No.
		A-210
issue		D

NOT FOR CONSTRUCTION



SECTION E-E

ISSUE	DATE	DESCRIPTION	initials	chkd
D	21-10-24	REISSUED FOR DA		
C	06-08-24	REISSUED FOR DA		
B	01-09-23	ISSUED FOR DA		
A	25-11-22	ISSUED FOR DRP		

sign _____ date _____
These drawings are not to be scaled. Figured dimensions shall be used in all cases.

COPYRIGHT - These drawings remain the exclusive copyright of ADM Architects. Reproductions in any form whether electronic, digital or otherwise shall not be allowed except by express permission granted in writing by ADM Architects.
FIGURED DIMENSIONS - These drawings are not to be scaled. Figured dimensions shall be used in all cases.
DISCREPANCIES IN DIMENSIONS/POSITIONS/LOCATIONS/FINISHES The Contractor is to verify any dimensional, location or finish discrepancy with ADM Architects prior to any physical construction or setting out so that ADM Architects is given the opportunity to resolve potential discrepancies or conflicts in sufficient time without causing abortive work. The Contractor shall be responsible for notifying ADM Architects of any such discrepancy or conflict that may arise on site.
CO-ORDINATION OF WORKS - These drawings are to be read in conjunction with the full set of consultant's drawings, specifications, reports and DA conditions.
NOMINATED ARCHITECT - The nominated Architect for ADM Projects (Australia) Pty Ltd T/A ADM Architects is Angelo Di Martino ARB No.7608



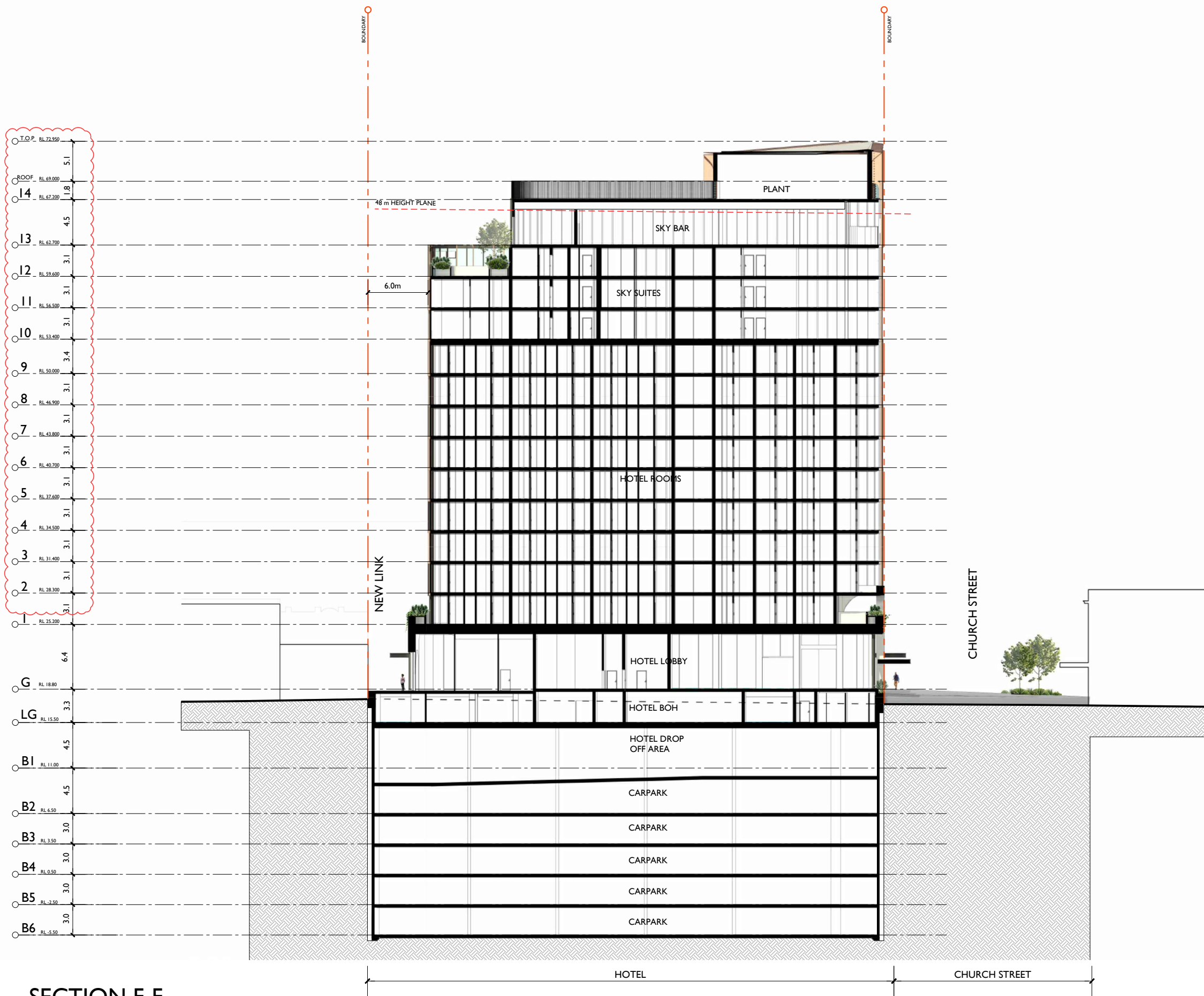
adm
ARCHITECTS
94 Kembla St, Wollongong NSW 2500 PO Box 3561 Wollongong
ph: 02 4228 8400 fax: 02 4228 8455 www.admarchitects.com.au

JACKSON TEECE
Sydney Unit 1, Floor 8/8, 22 Hickson Road Sydney, NSW 2000 Australia t: +61 2 9292 1722 f: +61 2 9292 1780 jtylin@jacksonteece.com
Brisbane Level 20, 244 Queen Street Brisbane, QLD 4000 Australia t: +61 7 3226 2771 f: +61 7 3226 2386 brisbane@jacksonteece.com
National Architects Damien Barker (B192), John Goss (B1795), Daniel Hutton (B116)
Concepts and information contained in this drawing are copyright and may not be reproduced in whole or part or by any medium, without the written permission of Jackson Teece. Do not scale this drawing, use figured dimensions only. Verify all project dimensions before commencing on-site work or off-site fabrication. Notify Jackson Teece of any discrepancies and seek instructions.

Project
PROPOSED 3-STAGE MIXED USE
DEVELOPMENT COMPRISING OF
HOTEL, OFFICE, MOTEL AND CLUB
OVER BASEMENT PARKING
for
171 CROWN PTY LTD
at
80-82 CHURCH & 163-171 CROWN ST
WOLLONGONG

scale 1:200 @ A1 1:400 @ A3
date OCTOBER 2024
drawn LGD SJ HR chkd ADM
drawing
DEVELOPMENT APPLICATION
SECTION E-E
Project No. 2021-15
Drawing No. A-211
issue D

NOT FOR CONSTRUCTION



SECTION F-F

D	21-10-24	REISSUED FOR DA		
C	06-08-24	REISSUED FOR DA		
B	01-09-23	ISSUED FOR DA		
A	25-11-22	ISSUED FOR DRP		
ISSUE	DATE	DESCRIPTION	initials	chkd
sign _____ date _____				
These drawings are not to be scaled. Figured dimensions shall be used in all cases.				

COPYRIGHT - These drawings remain the exclusive copyright of ADM Architects. Reproductions in any form whether electronic, digital or otherwise shall not be allowed except by express permission granted in writing by ADM Architects.

FIGURED DIMENSIONS - These drawings are not to be scaled. Figured dimensions shall be used in all cases.

DISCREPANCIES IN DIMENSIONS/POSITIONS/LOCATIONS/FINISHES The Contractor is to verify any dimensional, location or finish discrepancy with ADM Architects prior to any physical construction or setting out so that ADM Architects is given the opportunity to resolve potential discrepancies or conflicts in sufficient time without causing abortive work. The Contractor shall be responsible for notifying ADM Architects of any such discrepancy or conflict that may arise on site.

COORDINATION OF WORKS - These drawings are to be read in conjunction with the full set of consultant's drawings, specifications, reports and DA conditions.

NOMINATED ARCHITECT - The nominated Architect for ADM Projects (Australia) Pty Ltd T/A ADM Architects is Angelo Di Martino ARB No.7608



adm
ARCHITECTS

94 Kembla St, Wollongong NSW 2500 PO Box 3561 Wollongong
ph: 02 4228 8400 fax: 02 4228 6455 www.admarchitects.com.au

JACKSON TEECE

Sydney: Level 1, Pier 6/6, 22 Hickson Road
Sydney, NSW 2000 Australia
T +61 2 9250 7722
F +61 2 9250 7789
sydney@jacksonteece.com

Brisbane: Level 20, 244 Queen Street
Brisbane, QLD 4000 Australia
T +61 7 3206 2771
F +61 7 3206 2186
brisbane@jacksonteece.com

Melbourne: Level 10, 244 Queen Street
Melbourne, VIC 3000 Australia
T +61 3 9593 8770
F +61 3 9593 8770
melbourne@jacksonteece.com

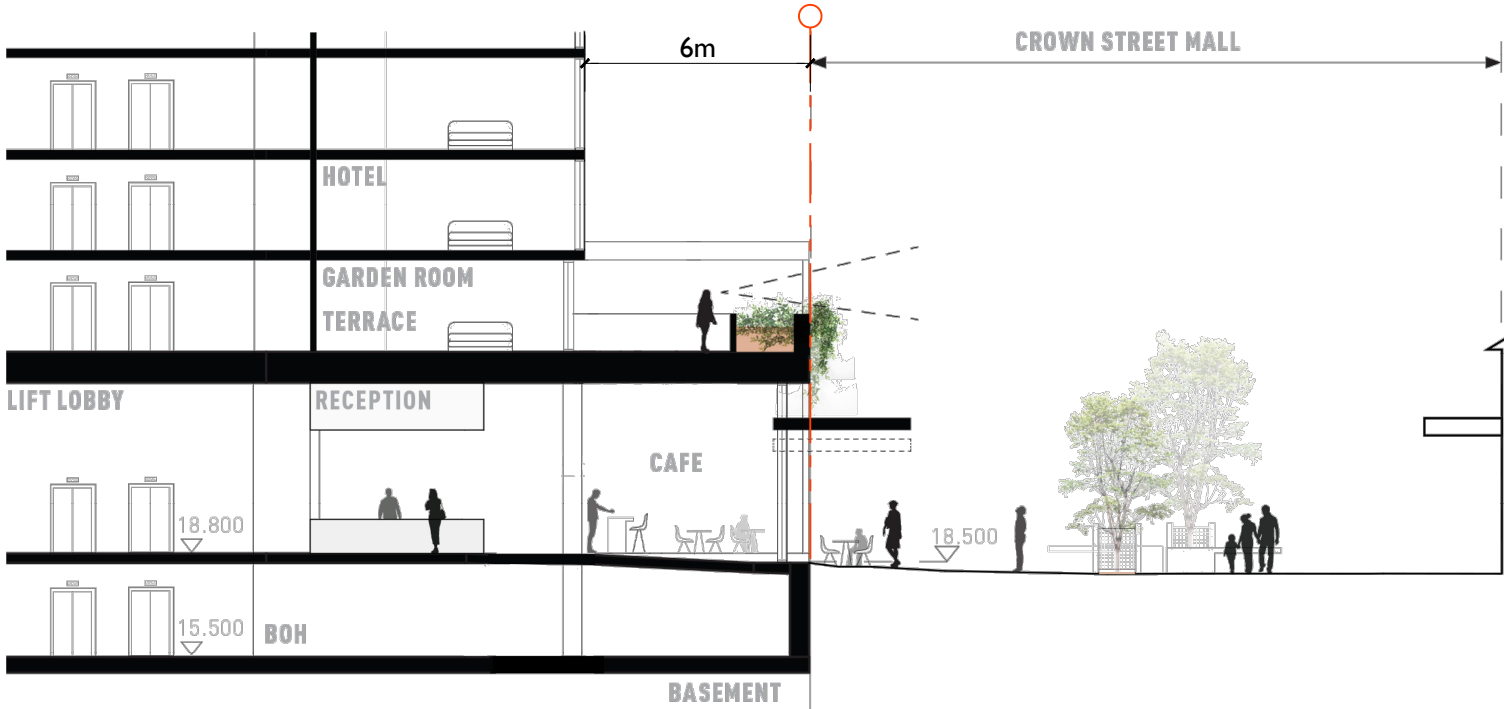
Nominated Architects
Darren Barker (B152), John Goss (B176), Daniel Hudson (B116)

Concepts and information contained in this drawing are copyright and may not be reproduced in whole or part or by any medium, without the written permission of Jackson Teece. Do not scale this drawing, use figured dimensions only. Verify all project dimensions before commencing on-site work or off-site fabrication. Notify Jackson Teece of any discrepancies and seek instructions.

Project
PROPOSED 3-STAGE MIXED USE DEVELOPMENT COMPRISING OF HOTEL, OFFICE, MOTEL AND CLUB OVER BASEMENT PARKING
for
171 CROWN PTY LTD
at
80-82 CHURCH & 163-171 CROWN ST WOLLONGONG

scale 1:200 @ A1 1:400 @ A3
date **OCTOBER 2024**
drawn LGD SJ HR chkd ADM
drawing
DEVELOPMENT APPLICATION SECTION F-F
Project No. 2021-15
Drawing No. A-212
issue D

NOT FOR CONSTRUCTION



INTERFACE SECTION
CROWN (MALL) STREET ASPECT

C	21-10-24	REISSUED FOR DA		
B	01-09-23	ISSUED FOR DA		
A	25-11-22	ISSUED FOR DRP		
ISSUE	DATE	DESCRIPTION	initials	chkd
sign			date	
These drawings are not to be scaled. Figured dimensions shall be used in all cases.				

COPYRIGHT - These drawings remain the exclusive copyright of ADM Architects. Reproductions in any form whether electronic, digital or otherwise shall not be allowed except by express permission granted in writing by ADM Architects.

FIGURED DIMENSIONS - These drawings are not to be scaled. Figured dimensions shall be used in all cases.

DISCREPANCIES IN DIMENSIONS/POSITIONS/LOCATIONS/FINISHES - The Contractor is to verify any dimensional, location or finish discrepancy with ADM Architects prior to any physical construction or setting out so that ADM Architects is given the opportunity to resolve potential discrepancies or conflicts in sufficient time without causing abortive work. The Contractor shall be responsible for notifying ADM Architects of any such discrepancy or conflict that may arise on site.

COORDINATION OF WORKS - These drawings are to be read in conjunction with the full set of consultant's drawings, specifications, reports and DA conditions.

NOMINATED ARCHITECT - The nominated Architect for ADM Projects (Australia) Pty Ltd T/A ADM Architects is Angelo Di Martino ARB No.7608



JACKSON TEECE

Sydney: Level 9, 211 Hudson Road
Sydney, NSW 2000 Australia
T +61 2 9250 1772
F +61 2 9250 1780
sydney@jacksonteece.com

Brisbane: Level 20, 244 Queen Street
Brisbane, QLD 4000 Australia
T +61 7 5206 2771
F +61 7 5206 2386
brisbane@jacksonteece.com

Melbourne: Level 20, 244 Queen Street
Melbourne, VIC 3000 Australia
T +61 3 9250 1772
F +61 3 9250 1780
melbourne@jacksonteece.com

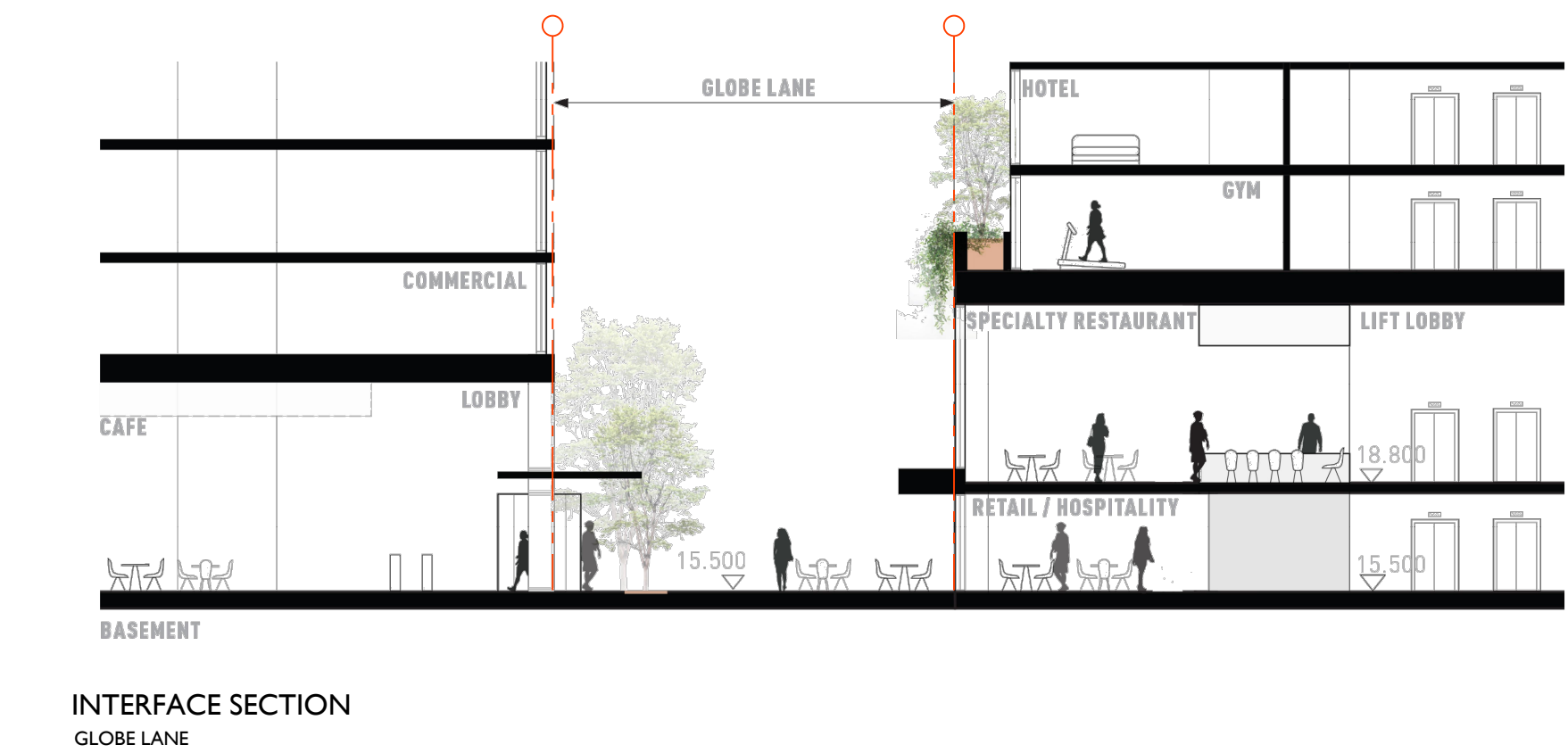
Nominated Architects:
Darren Barker (B152), John Goss (B179), Daniel Hutton (B116)

Concepts and information contained in this drawing are copyright and may not be reproduced in whole or part or by any medium, without the written permission of Jackson Teece. Do not scale this drawing, use figured dimensions only. Verify all project dimensions before commencing on-site work or off-site fabrication. Notify Jackson Teece of any discrepancies and seek instructions.

Project
PROPOSED 3-STAGE MIXED USE
DEVELOPMENT COMPRISING OF
HOTEL, OFFICE, MOTEL AND CLUB
OVER BASEMENT PARKING
for
171 CROWN PTY LTD
at
80-82 CHURCH & 163-171 CROWN ST
WOLLONGONG

scale 1:100 @ A1 1:200 @ A3
date OCTOBER 2024
drawn LGD SJ HR chkd ADM
drawing
DEVELOPMENT APPLICATION
INTERFACE SECTION 01
Project No. 2021-15
Drawing No. A-213
issue C

NOT FOR CONSTRUCTION



NOT FOR CONSTRUCTION

C	21-10-24	REISSUED FOR DA		
B	01-09-23	ISSUED FOR DA		
A	25-11-22	ISSUED FOR DRP		
ISSUE	DATE	DESCRIPTION	initials	chkd
sign	date			
These drawings are not to be scaled. Figured dimensions shall be used in all cases.				

COPYRIGHT - These drawings remain the exclusive copyright of ADM Architects. Reproductions in any form whether electronic, digital or otherwise shall not be allowed except by express permission granted in writing by ADM Architects.

FIGURED DIMENSIONS - These drawings are not to be scaled. Figured dimensions shall be used in all cases.

DISCREPANCIES IN DIMENSIONS/POSITIONS/LOCATIONS/FINISHES The Contractor is to verify any dimensional, location or finish discrepancy with ADM Architects prior to any physical construction or setting out so that ADM Architects is given the opportunity to resolve potential discrepancies or conflicts in sufficient time without causing abortive work. The Contractor shall be responsible for notifying ADM Architects of any such discrepancy or conflict that may arise on site.

COORDINATION OF WORKS - These drawings are to be read in conjunction with the full set of consultant's drawings, specifications, reports and DA conditions.

NOMINATED ARCHITECT - The nominated Architect for ADM Projects (Australia) Pty Ltd T/A ADM Architects is Angelo Di Martino ARB No.7608



adm
ARCHITECTS

94 Kerebia St, Wollongong NSW 2500 PO Box 3561 Wollongong
ph: 02 4228 6400 fax: 02 4228 6455 www.admarchitects.com.au

JACKSON TEECE

Sydney
Level 1, Part B, 22 Hickson Road
Sydney, NSW 2000 Australia
T +61 2 9260 1772
F +61 2 9260 1780
sydney@jacksonteece.com

Brisbane
Level 20, 244 Queen Street
Brisbane, QLD 4000 Australia
T +61 7 5206 2771
F +61 7 5206 2386
brisbane@jacksonteece.com

Nominated Architects
Darren Barker (B192), John Goss (B1795), Daniel Hutton (B116)

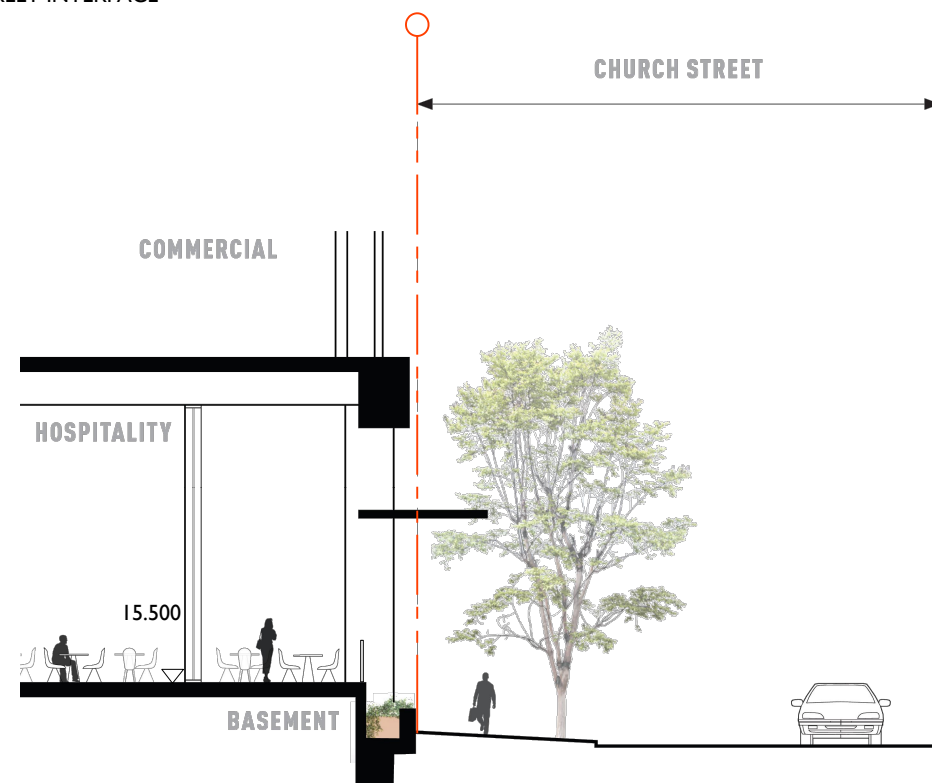
Concepts and information contained in this drawing are copyright and may not be reproduced in whole or part or by any medium, without the written permission of Jackson Teece. Do not scale this drawing, use figured dimensions only. Verify all project dimensions before commencing on-site work or off-site fabrication. Notify Jackson Teece of any discrepancies and seek instructions.

Project
PROPOSED 3-STAGE MIXED USE DEVELOPMENT COMPRISING OF HOTEL, OFFICE, MOTEL AND CLUB OVER BASEMENT PARKING
for
171 CROWN PTY LTD
at
80-82 CHURCH & 163-171 CROWN ST WOLLONGONG

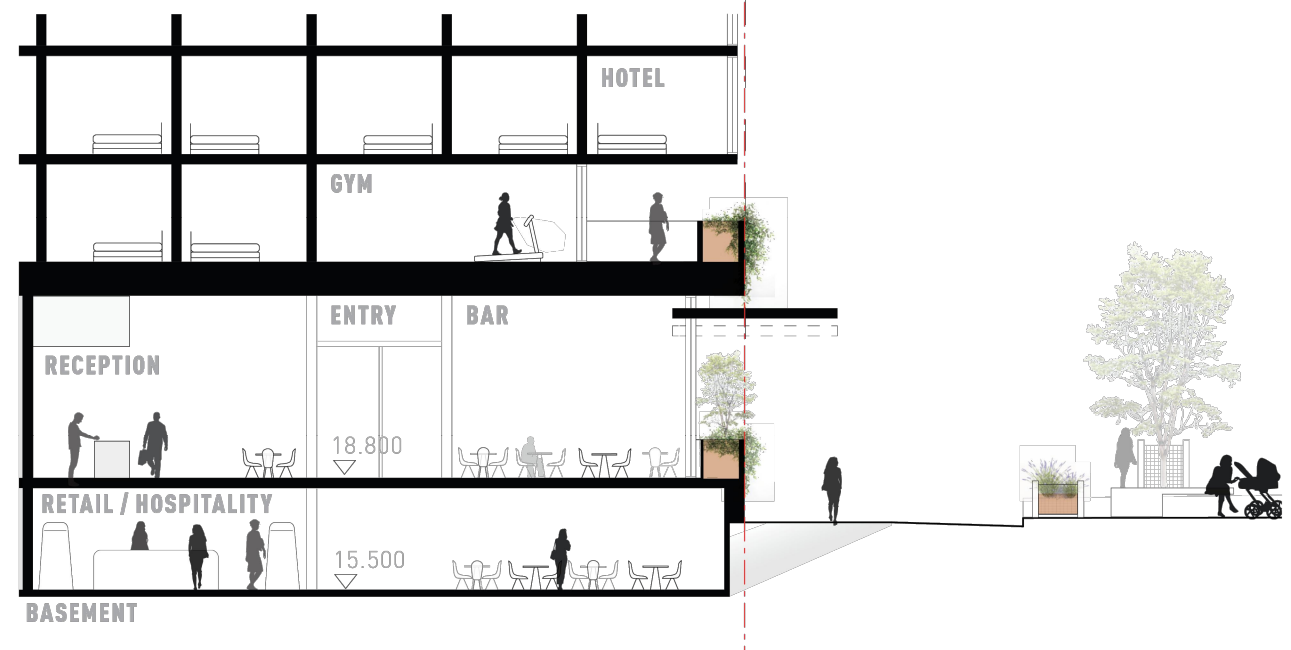
scale	1:100 @ A1 1:200 @ A3
date	OCTOBER 2024
drawn	LGD SJ HR chkd ADM
drawing	DEVELOPMENT APPLICATION
Project No.	Interface Section 02
2021-15	A-214
issue	C



PROPOSED ELEVATION
CHURCH STREET INTERFACE



INTERFACE SECTION
CHURCH STREET (COMMERCIAL)



INTERFACE SECTION
CHURCH STREET (HOTEL)

NOT FOR CONSTRUCTION

C	21-10-24	REISSUED FOR DA		
B	01-09-23	ISSUED FOR DA		
A	25-11-22	ISSUED FOR DRP		
ISSUE	DATE	DESCRIPTION	initials	chkd
sign			date	
* These drawings are not to be scaled. Figured dimensions shall be used in all cases.				

COPYRIGHT - These drawings remain the exclusive copyright of ADM Architects. Reproductions in any form whether electronic, digital or otherwise shall not be allowed except by express permission granted in writing by ADM Architects.

FIGURED DIMENSIONS - These drawings are not to be scaled. Figured dimensions shall be used in all cases.

DISCREPANCIES IN DIMENSIONS/POSITIONS/LOCATIONS/FINISHES The Contractor is to verify any dimensional, location or finish discrepancy with ADM Architects prior to any physical construction or setting out so that ADM Architects is given the opportunity to resolve potential discrepancies or conflicts in sufficient time without causing abortive work. The Contractor shall be responsible for notifying ADM Architects of any such discrepancy or conflict that may arise on site.

COORDINATION OF WORKS - These drawings are to be read in conjunction with the full set of consultant's drawings, specifications, reports and DA conditions.

NOMINATED ARCHITECT - The nominated Architect for ADM Projects (Australia) Pty Ltd T/A ADM Architects is Angelo Di Martino ARB No.7608



adm
ARCHITECTS

94 Kerebia St, Wollongong NSW 2500 PO Box 3561 Wollongong
ph: 02 4228 8400 fax: 02 4228 6455 www.admarchitects.com.au

JACKSON TEECE

Sydney
Level 9, War Bldg, 221 Hickson Road
Sydney, NSW 2000 Australia
T +61 2 9292 7722
F +61 2 9292 7780
sydney@jacksonteece.com

Brisbane
Level 20, 344 Queen Street
Brisbane, QLD 4000 Australia
T +61 7 5206 2771
F +61 7 5206 2386
brisbane@jacksonteece.com

Nominated Architects
Darren Barker (B192), John Goss (B1795), Daniel Hutton (B110)

Concepts and information contained in this drawing are copyright and may not be reproduced in whole or part or by any medium, without the written permission of Jackson Teece. Do not scale this drawing, use figured dimensions only. Verify all project dimensions before commencing on-site work or off-site fabrication. Notify Jackson Teece of any discrepancies and seek instructions.

Project
PROPOSED 3-STAGE MIXED USE
DEVELOPMENT COMPRISING OF
HOTEL, OFFICE, MOTEL AND CLUB
OVER BASEMENT PARKING
for
171 CROWN PTY LTD
at
80-82 CHURCH & 163-171 CROWN ST
WOLLONGONG

scale 1:100 @ A1 1:200 @ A3
date OCTOBER 2024
drawn LGD SJ HR chkd ADM
drawing
DEVELOPMENT APPLICATION
INTERFACE SECTION 03
Project No. Drawing No. issue
2021-15 A-215 C



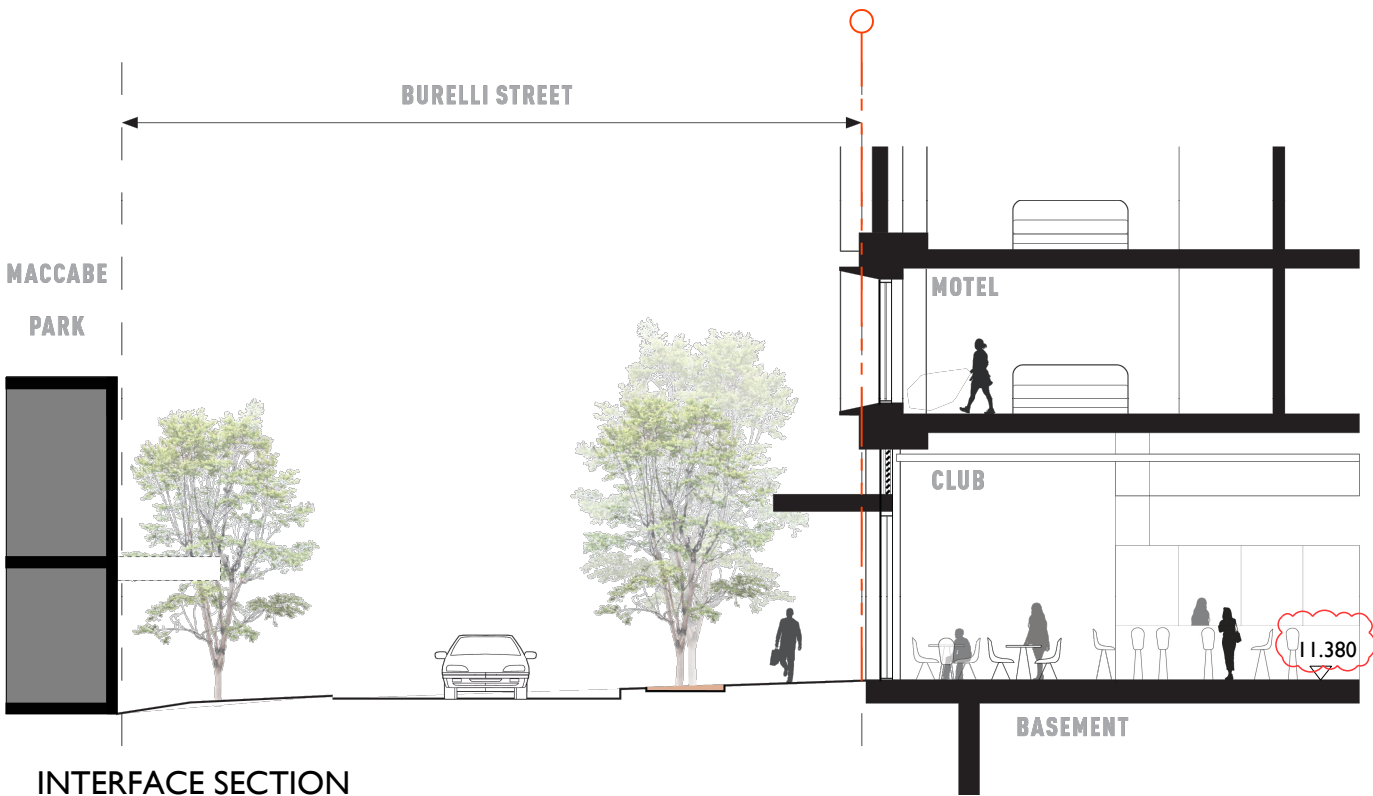
PROPOSED ELEVATION
BURELLI STREET INTERFACE

SERVICE
VEHICLE ENTRY

MOTEL

CLUB

MOTEL
ENTRY



INTERFACE SECTION
BURELLI STREET (CLUB & MOTEL)

D	03-12-24	REISSUED FOR DA		
C	21-10-24	REISSUED FOR DA		
B	01-09-23	ISSUED FOR DA		
A	25-11-22	ISSUED FOR DRP		
ISSUE	DATE	DESCRIPTION	initials	chkd
sign			date	
ⓘ These drawings are not to be scaled. Figured dimensions shall be used in all cases.				

COPYRIGHT - These drawings remain the exclusive copyright of ADM Architects. Reproductions in any form whether electronic, digital or otherwise shall not be allowed except by express permission granted in writing by ADM Architects.

FIGURED DIMENSIONS - These drawings are not to be scaled. Figured dimensions shall be used in all cases.

DISCREPANCIES IN DIMENSIONS/POSITIONS/LOCATIONS/FINISHES - The Contractor is to verify any dimensional, location or finish discrepancy with ADM Architects prior to any physical construction or setting out so that ADM Architects is given the opportunity to resolve potential discrepancies or conflicts in sufficient time without causing abortive work. The Contractor shall be responsible for notifying ADM Architects of any such discrepancy or conflict that may arise on site.

COORDINATION OF WORKS - These drawings are to be read in conjunction with the full set of consultant's drawings, specifications, reports and DA conditions.

NOMINATED ARCHITECT - The nominated Architect for ADM Projects (Australia) Pty Ltd T/A ADM Architects is Angelo Di Martino ARB No.7608



JACKSON TEECE

Sydney
Level 1, Floor 8/8, 22 Hickson Road
Sydney, NSW 2000 Australia
T +61 2 9250 1772
F +61 2 9250 1780
sydney@jacksonteece.com

Brisbane
Level 20, 244 Queen Street
Brisbane, QLD 4000 Australia
T +61 7 5206 2771
F +61 7 5206 2386
brisbane@jacksonteece.com

Melbourne
Level 1, 100 Collins Street
Melbourne, VIC 3000 Australia
T +61 3 9593 8770
F +61 3 9593 8770
melbourne@jacksonteece.com

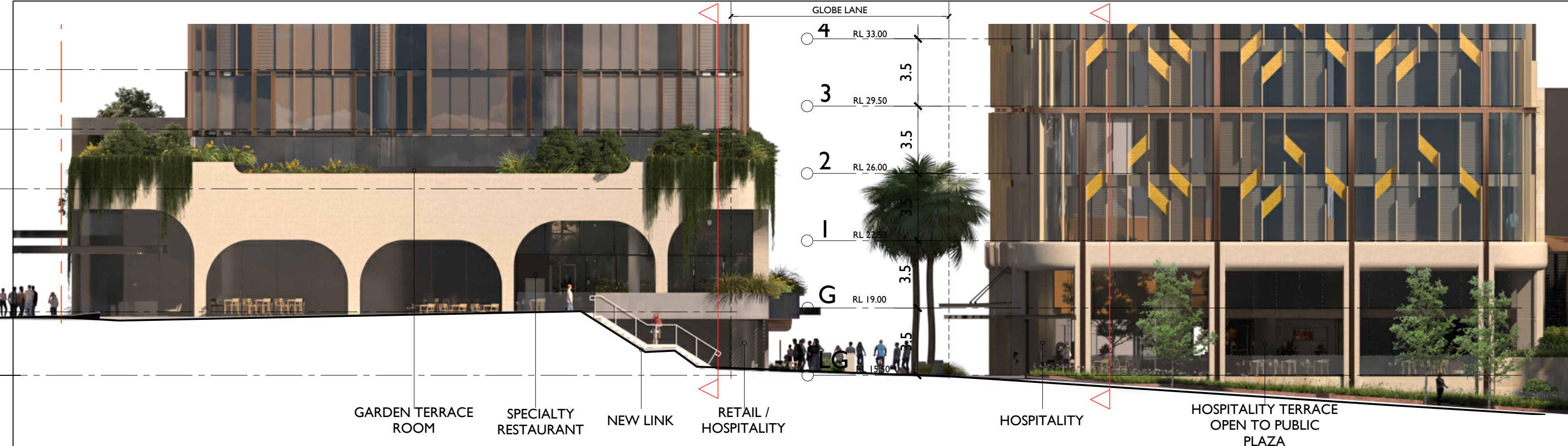
Nominated Architects
Darren Barker (0192), John Goss (0192), Daniel Hutton (0192)

Concepts and information contained in this drawing are copyright and may not be reproduced in whole or part or by any medium, without the written permission of Jackson Teece. Do not scale this drawing, use figured dimensions only. Verify all project dimensions before commencing on-site work or off-site fabrication. Notify Jackson Teece of any discrepancies and seek instructions.

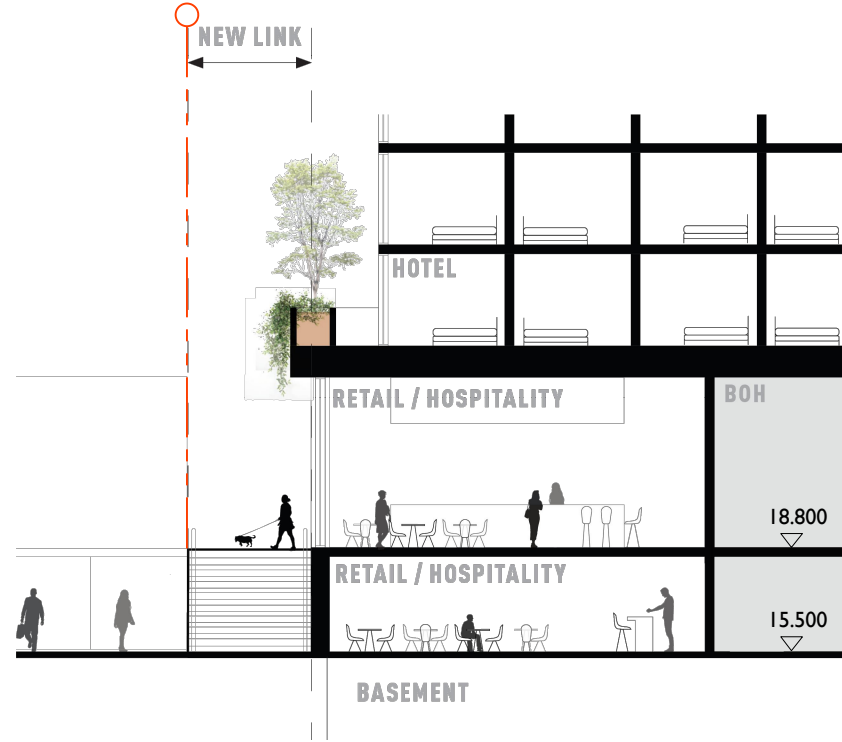
Project
PROPOSED 3-STAGE MIXED USE
DEVELOPMENT COMPRISING OF
HOTEL, OFFICE, MOTEL AND CLUB
OVER BASEMENT PARKING
for
171 CROWN PTY LTD
at
80-82 CHURCH & 163-171 CROWN ST
WOLLONGONG

scale	1:100 @ A1	1:200 @ A3
date	DECEMBER	2024
drawn	LGD	SJ HR chkd ADM
drawing	DEVELOPMENT APPLICATION	
Project No.	INTERFACE SECTION 04	
2021-15	A-216	issue D

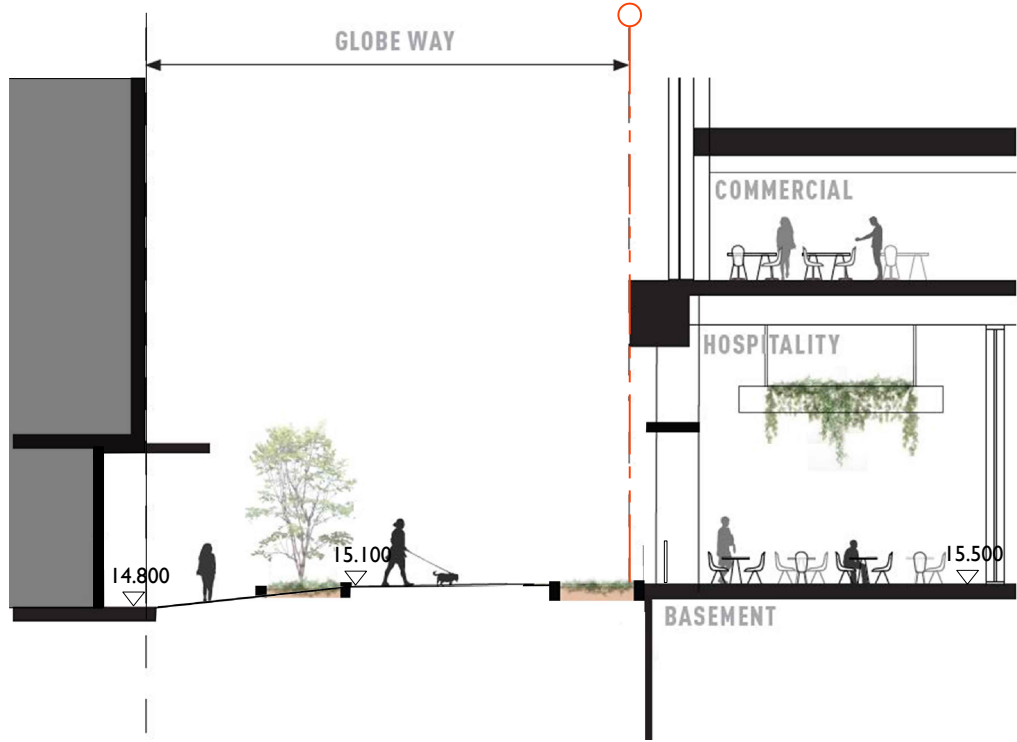
NOT FOR CONSTRUCTION



PROPOSED ELEVATION
GLOBE WAY INTERFACE



INTERFACE SECTION
NEW LINK



INTERFACE SECTION
GLOBE WAY

C	21-10-24	REISSUED FOR DA		
B	01-09-23	ISSUED FOR DA		
A	25-11-22	ISSUED FOR DRP		
ISSUE	DATE	DESCRIPTION	initials	chkd
sign			date	
o These drawings are not to be scaled. Figured dimensions shall be used in all cases.				

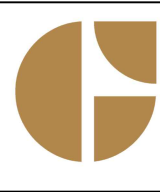
COPYRIGHT - These drawings remain the exclusive copyright of ADM Architects. Reproductions in any form whether electronic, digital or otherwise shall not be allowed except by express permission granted in writing by ADM Architects.

FIGURED DIMENSIONS - These drawings are not to be scaled. Figured dimensions shall be used in all cases.

DISCREPANCIES IN DIMENSIONS/POSITIONS/LOCATIONS/FINISHES The Contractor is to verify any dimensional, location or finish discrepancy with ADM Architects prior to any physical construction or setting out so that ADM Architects is given the opportunity to resolve potential discrepancies or conflicts in sufficient time without causing abortive work. The Contractor shall be responsible for notifying ADM Architects of any such discrepancy or conflict that may arise on site.

CO-ORDINATION OF WORKS - These drawings are to be read in conjunction with the full set of consultant's drawings, specifications, reports and DA conditions.

NOMINATED ARCHITECT - The nominated Architects for ADM Projects (Australia) Pty Ltd T/A ADM Architects is Angelo Di Martino ARB No.7608



adm
ARCHITECTS

94 Kerebia St, Wollongong NSW 2500 PO Box 3561 Wollongong
ph: 02 4228 8400 fax: 02 4228 8455 www.admarchitects.com.au

JACKSON TEECE

Sydney
Level 1, Floor 8/8, 22 Hickson Road
Sydney, NSW 2000 Australia
T +61 2 9250 7722
F +61 2 9250 7788
sydney@jacksonteece.com

Brisbane
Level 20, 244 Queen Street
Brisbane, QLD 4000 Australia
T +61 7 3226 2771
F +61 7 3226 2386
brisbane@jacksonteece.com

Melbourne
Level 1, 244 Queen Street
Melbourne, VIC 3000 Australia
T +61 3 9593 8770
F +61 3 9593 8770
melbourne@jacksonteece.com

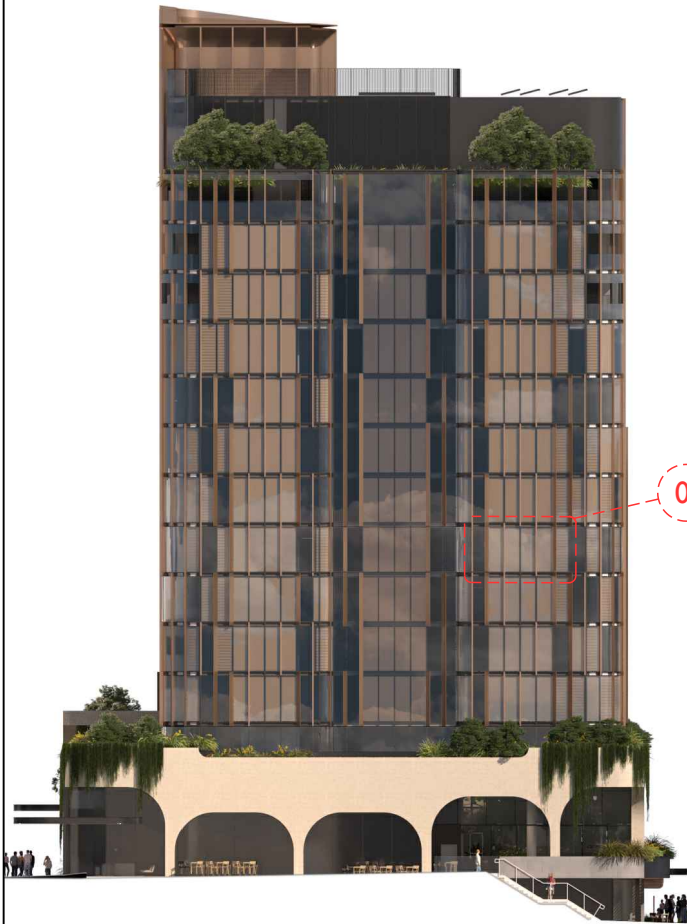
Nominated Architects
Darren Barker (0192), John Goss (0195), Daniel Hudson (0110)

Concepts and information contained in this drawing are copyright and may not be reproduced in whole or part or by any medium, without the written permission of Jackson Teece. Do not scale this drawing, use figured dimensions only. Verify all project dimensions before commencing on-site work or off-site fabrication. Notify Jackson Teece of any discrepancies and seek instructions.

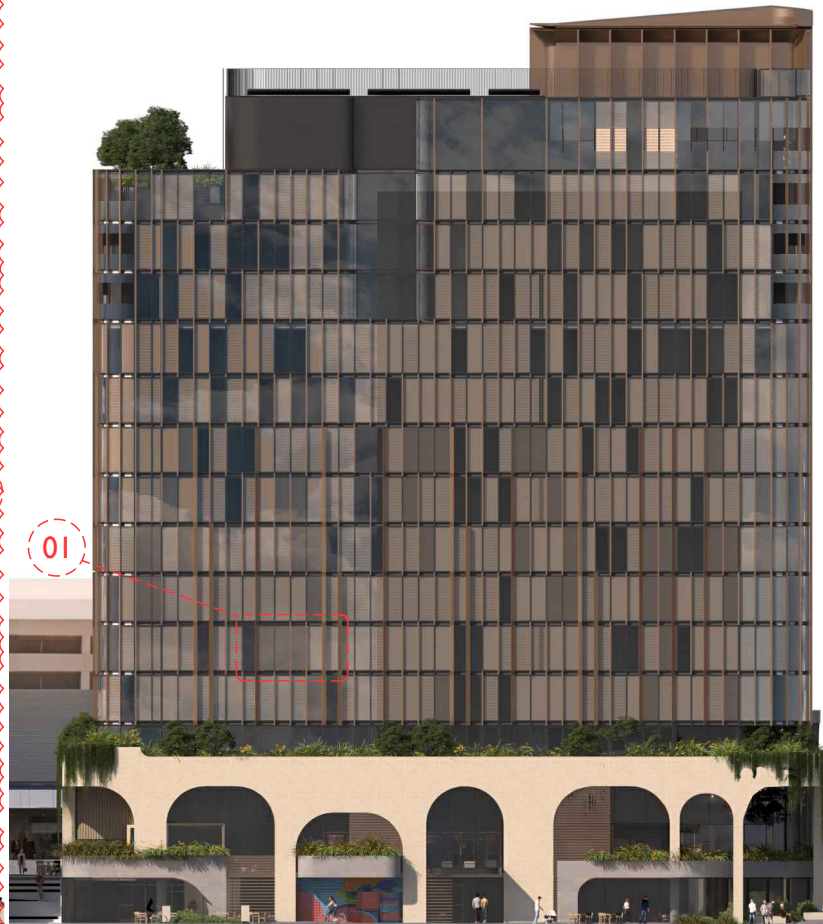
Project
PROPOSED 3-STAGE MIXED USE
DEVELOPMENT COMPRISING OF
HOTEL, OFFICE, MOTEL AND CLUB
OVER BASEMENT PARKING
for
171 CROWN PTY LTD
at
80-82 CHURCH & 163-171 CROWN ST
WOLLONGONG

scale	1:100 @ A1 1:200 @ A3
date	OCTOBER 2024
drawn	LGD SJ HR chkd ADM
drawing	DEVELOPMENT APPLICATION
Interface Section 05	
Project No.	2021-15
Drawing No.	A-217
issue	C

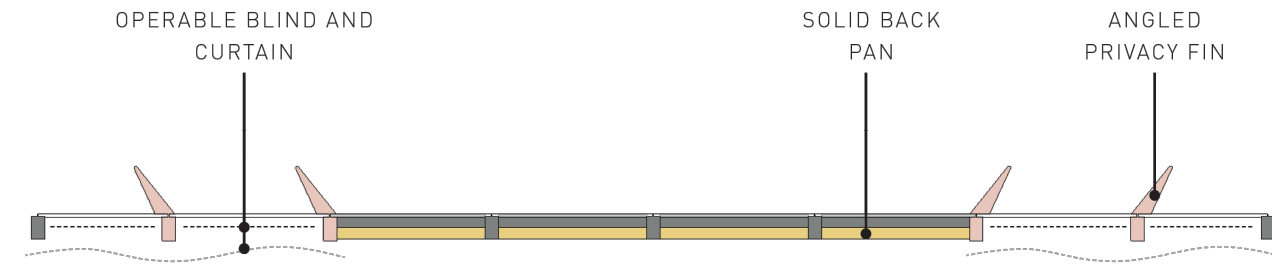
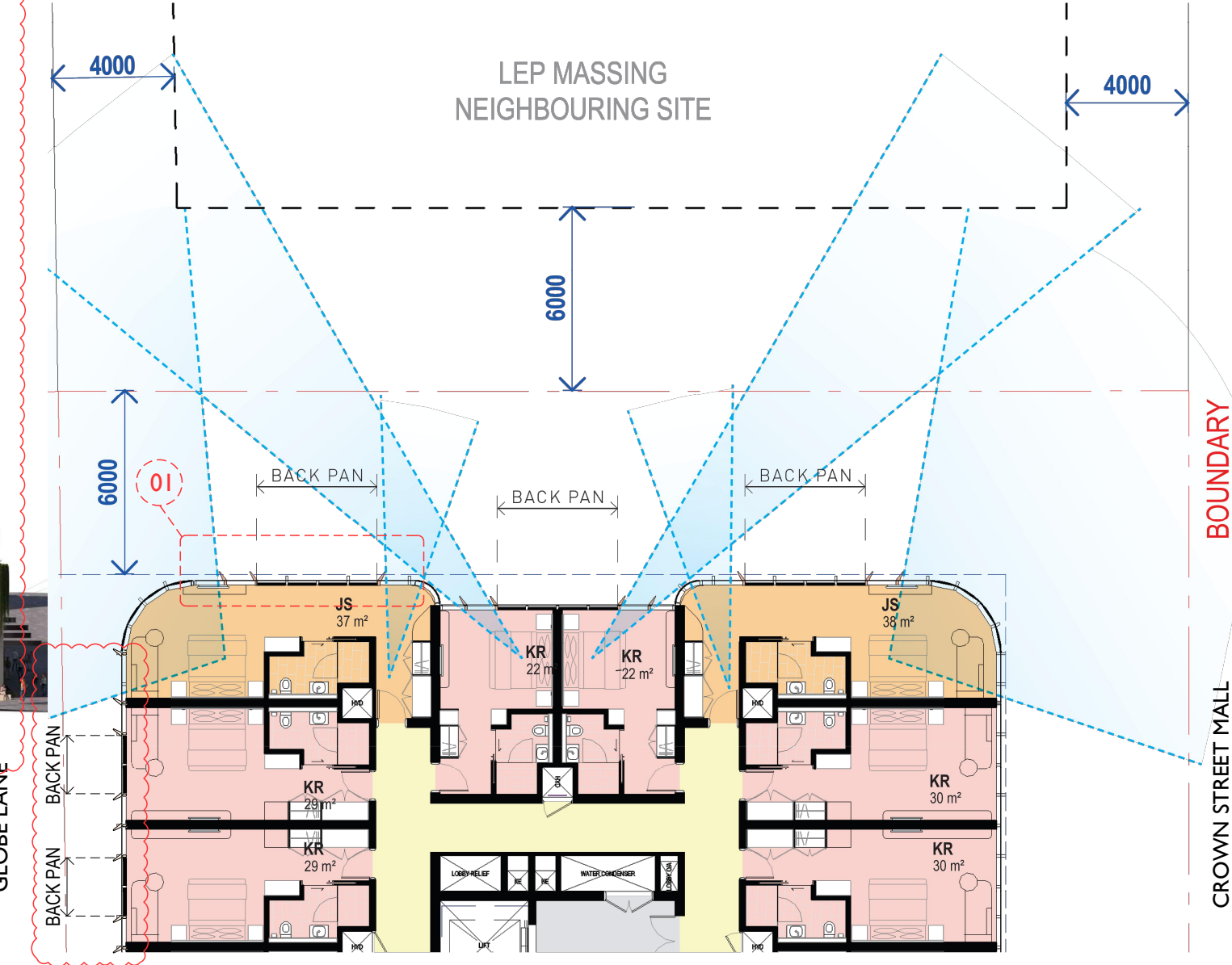
NOT FOR CONSTRUCTION



WEST FACADE ELEVATION



SOUTH FACADE ELEVATION



01 TYPICAL WESTERN & SOUTHERN (UP TO L7) FACADE TREATMENT

B A	21-10-24 25-11-22	REISSUED FOR DA ISSUED FOR DRP	initials	chkd
ISSUE	DATE	DESCRIPTION		
sign	date			
These drawings are not to be scaled. Figured dimensions shall be used in all cases.				

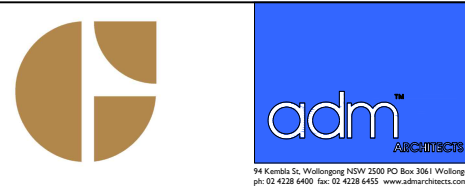
COPYRIGHT - These drawings remain the exclusive copyright of ADM Architects. Reproductions in any form whether electronic, digital or otherwise shall not be allowed except by express permission granted in writing by ADM Architects.

FIGURED DIMENSIONS - These drawings are not to be scaled. Figured dimensions shall be used in all cases.

DISCREPANCIES IN DIMENSIONS/POSITIONS/LOCATIONS/FINISHES The Contractor is to verify any dimensional, location or finish discrepancy with ADM Architects prior to any physical construction or setting out so that ADM Architects is given the opportunity to resolve potential discrepancies or conflicts in sufficient time without causing abortive work. The Contractor shall be responsible for notifying ADM Architects of any such discrepancy or conflict that may arise on site.

CO-ORDINATION OF WORKS - These drawings are to be read in conjunction with the full set of consultant's drawings, specifications, reports and DA conditions.

NOMINATED ARCHITECT - The nominated Architect for ADM Projects (Australia) Pty Ltd T/A ADM Architects is Angelo Di Martino ARB No.7608



JACKSON TEECE

Sydney
Level 9, 111-113, 221 Hickson Road
Sydney, NSW 2000 Australia
T +61 2 9292 1772
F +61 2 9292 1780
sydney@jacksonteece.com

Brisbane
Level 20, 244 Queen Street
Brisbane, QLD 4000 Australia
T +61 7 3226 2771
F +61 7 3226 2386
brisbane@jacksonteece.com

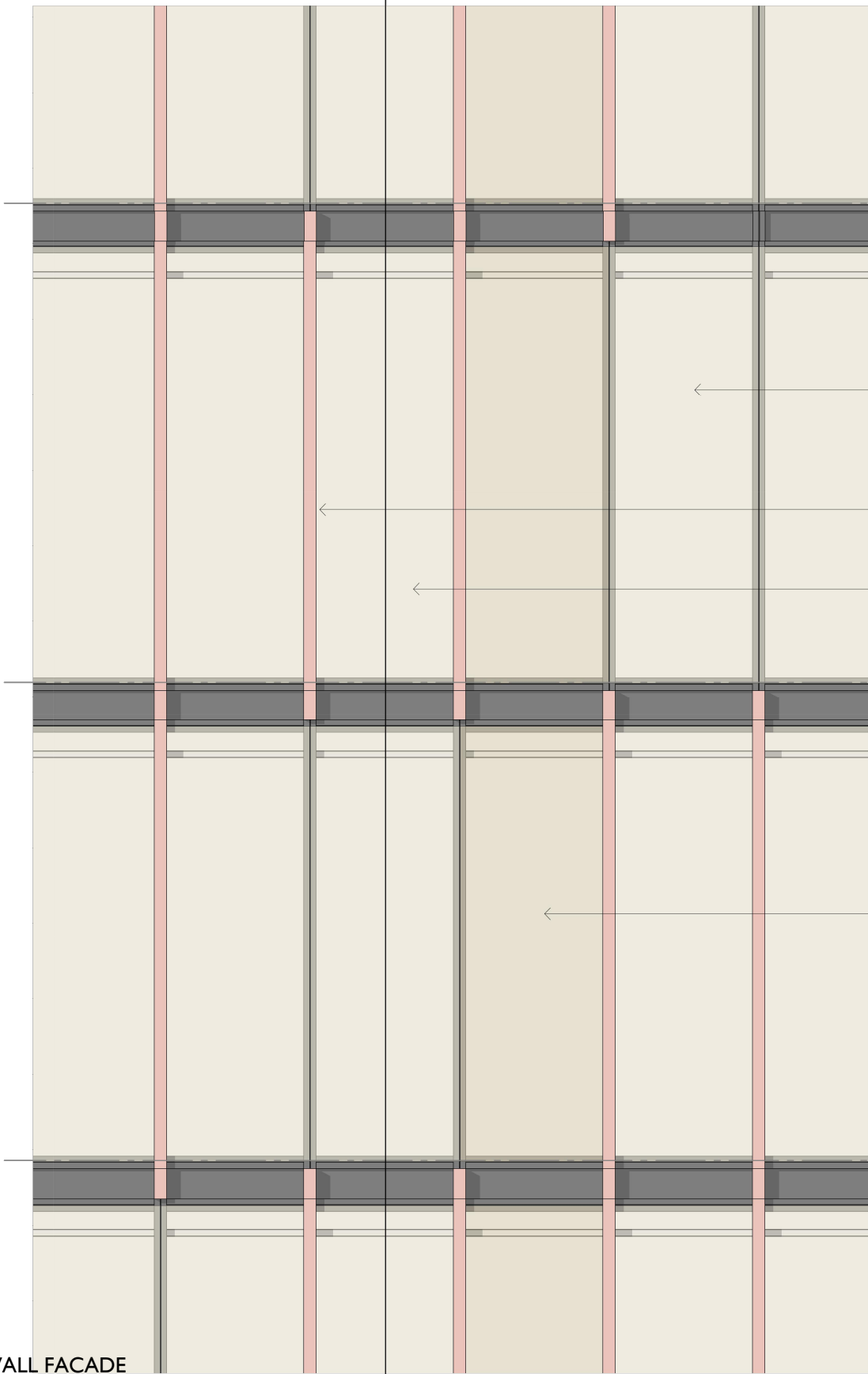
Melbourne
Level 10, 244 Queen Street
Melbourne, VIC 3000 Australia
T +61 3 9292 1772
F +61 3 9292 1780
melbourne@jacksonteece.com

Nominated Architects
Darren Barker (B192), John Goss (B179), Daniel Hutton (B110)

Concepts and information contained in this drawing are copyright and may not be reproduced in whole or part or by any medium, without the written permission of Jackson Teece. Do not scale this drawing, use figured dimensions only. Verify all project dimensions before commencing on-site work or off-site fabrication. Notify Jackson Teece of any discrepancies and seek instructions.

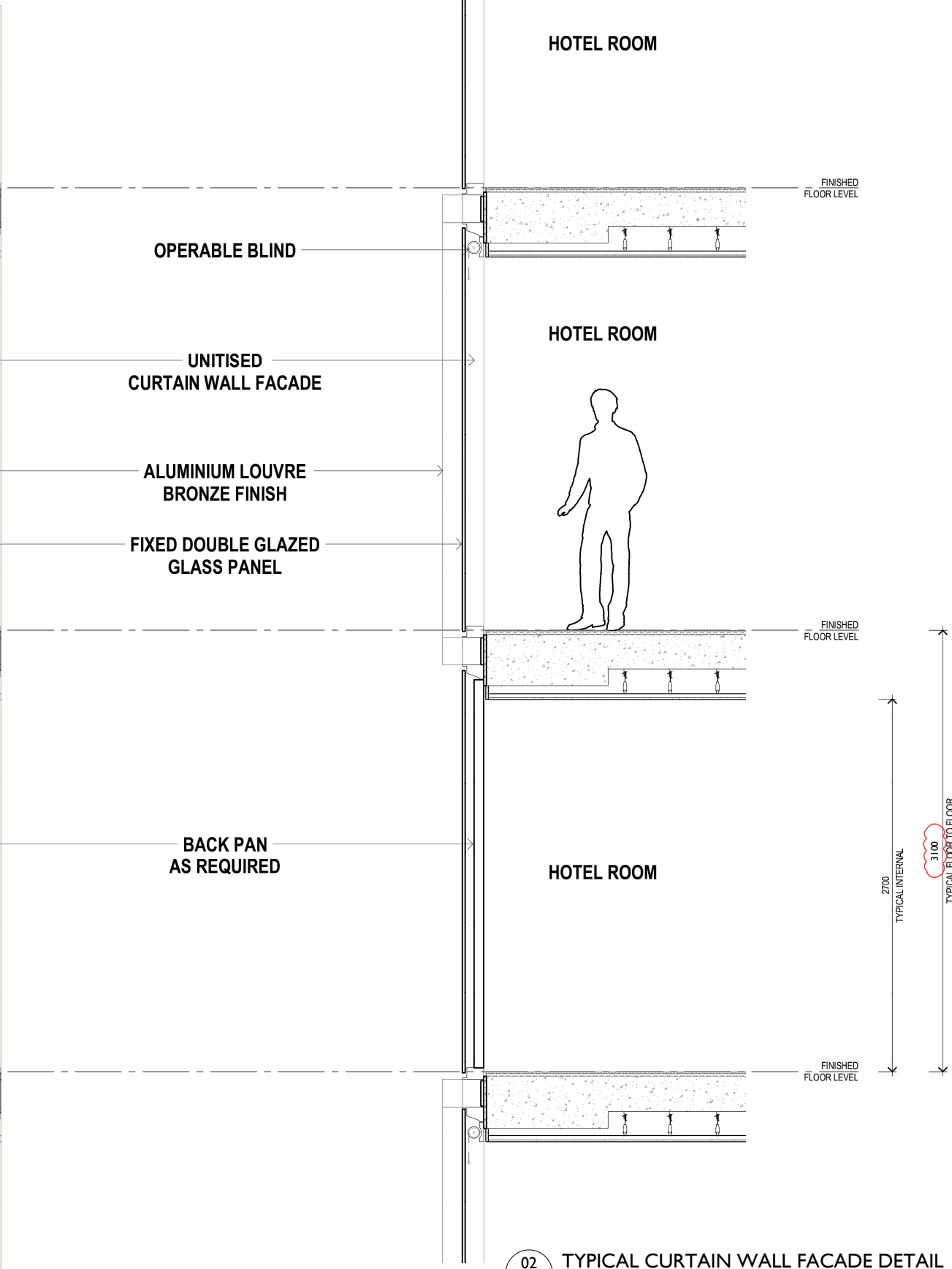
Project
PROPOSED 3-STAGE MIXED USE
DEVELOPMENT COMPRISING OF
HOTEL, OFFICE, MOTEL AND CLUB
OVER BASEMENT PARKING
for
171 CROWN PTY LTD
at
80-82 CHURCH & 163-171 CROWN ST
WOLLONGONG

scale NTS
date OCTOBER 2024
drawn LGD SJ HR chkd ADM
drawing
DEVELOPMENT APPLICATION
DETAILED SECTION - WEST & SOUTH FACADE
Project No. 2021-15
Drawing No. A-218
issue B



01 TYPICAL CURTAIN WALL FACADE

SCALE 1:20 @ A1
REFER NABERS REPORT FOR THERMAL RATING DETAILS



02 TYPICAL CURTAIN WALL FACADE DETAIL

SCALE 1:20 @ A1

ISSUE	DATE	DESCRIPTION	INITIALS	CHKD
B	21-10-24	REISSUED FOR DA		
A	25-11-22	ISSUED FOR DRP		

sign _____ date _____
These drawings are not to be scaled. Figured dimensions shall be used in all cases.

COPYRIGHT - These drawings remain the exclusive copyright of ADM Architects. Reproductions in any form whether electronic, digital or otherwise shall not be allowed except by express permission granted in writing by ADM Architects.
FIGURED DIMENSIONS - These drawings are not to be scaled. Figured dimensions shall be used in all cases.
DISCREPANCIES IN DIMENSIONS/POSITIONS/LOCATIONS/FINISHES The Contractor is to verify any dimensional, location or finish discrepancy with ADM Architects prior to any physical construction or setting out so that ADM Architects is given the opportunity to resolve potential discrepancies or conflicts in sufficient time without causing abortive work. The Contractor shall be responsible for notifying ADM Architects of any such discrepancy or conflict that may arise on site.
CO-ORDINATION OF WORKS - These drawings are to be read in conjunction with the full set of consultant's drawings, specifications, reports and DA conditions.
NOMINATED ARCHITECT - The nominated Architect for ADM Projects (Australia) Pty Ltd T/A ADM Architects is Angelo Di Martino ARB No.7608



adm
ARCHITECTS
94 Kembla St, Wollongong NSW 2500 PO Box 3561 Wollongong
ph: 02 4228 6400 fax: 02 4228 6455 www.admarchitects.com.au

JACKSON TEECE
Sydney Unit 1, Pier 6/6, 23 Hickson Road Sydney, NSW 2000 Australia
t +61 2 9250 1772 f +61 2 9250 1780
sydney@jacksonteece.com
Brisbane Unit 20, 244 Queen Street Brisbane, QLD 4000 Australia
t +61 7 3206 2771 f +61 7 3206 2386
brisbane@jacksonteece.com
Nominated Architects
Darren Barber (B152), John Goss (B179), Daniel Hutton (B115)
Concepts and information contained in this drawing are copyright and may not be reproduced in whole or part or by any medium, without the written permission of Jackson Teece. Do not scale this drawing, use figured dimensions only. Verify all project dimensions before commencing on-site work or off-site fabrication. Notify Jackson Teece of any discrepancies and seek instructions.

Project
PROPOSED 3-STAGE MIXED USE
DEVELOPMENT COMPRISING OF
HOTEL, OFFICE, MOTEL AND CLUB
OVER BASEMENT PARKING
for
171 CROWN PTY LTD
at
80-82 CHURCH & 163-171 CROWN ST
WOLLONGONG

scale AS NOTED
date OCTOBER 2024
drawn LGD SJ HR chkd ADM
drawing
DEVELOPMENT APPLICATION
DETAILED SECTION - CURTAIN WALL
Project No. 2021-15
Drawing No. A-219
issue B

NOT FOR CONSTRUCTION

